

MS-P8016 SPECIFICATION SHEET



Our MS-P8016 Profile is designed to be used in drywall skirting applications. The profile is anodized and therefore suitable to be coated in your desired color paint. The aluminum extrusion is designed to house our LED strip or LED Tape making it easy to create your own LED Skirting Lights. The aluminum LED Track affords excellent heat sink properties to provide maximum life to your led strip lights. This profile comes in two parts, i.e. the fixing profile and the front profile.

FEATURES

- According to your installation occasions for you to make the plan
- DIY products to do the pattern as your like
- For Wholesale, Retails, Project, Building, Distribution sales channels

SPECIFICATIONS

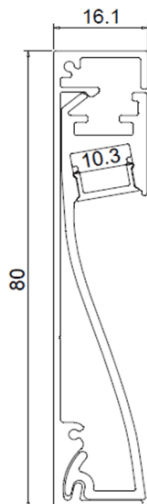
TYPE	Recessed mount
AVAILABLE LIGHTS	8mm,10mm
FINISH	Anodized
Length	0.5~3meters

COMPONENTS





Aluminum	6063T5 Aircraft Aluminum
PC Cover	Clear/Diffused
End Cap	Plastic

Compatible with LED strips up to 10mm wide.
 LED tape light sold separately.
 Remote mounted low voltage power supply sold separately.
 Power supplies also available in 120v and 227v options

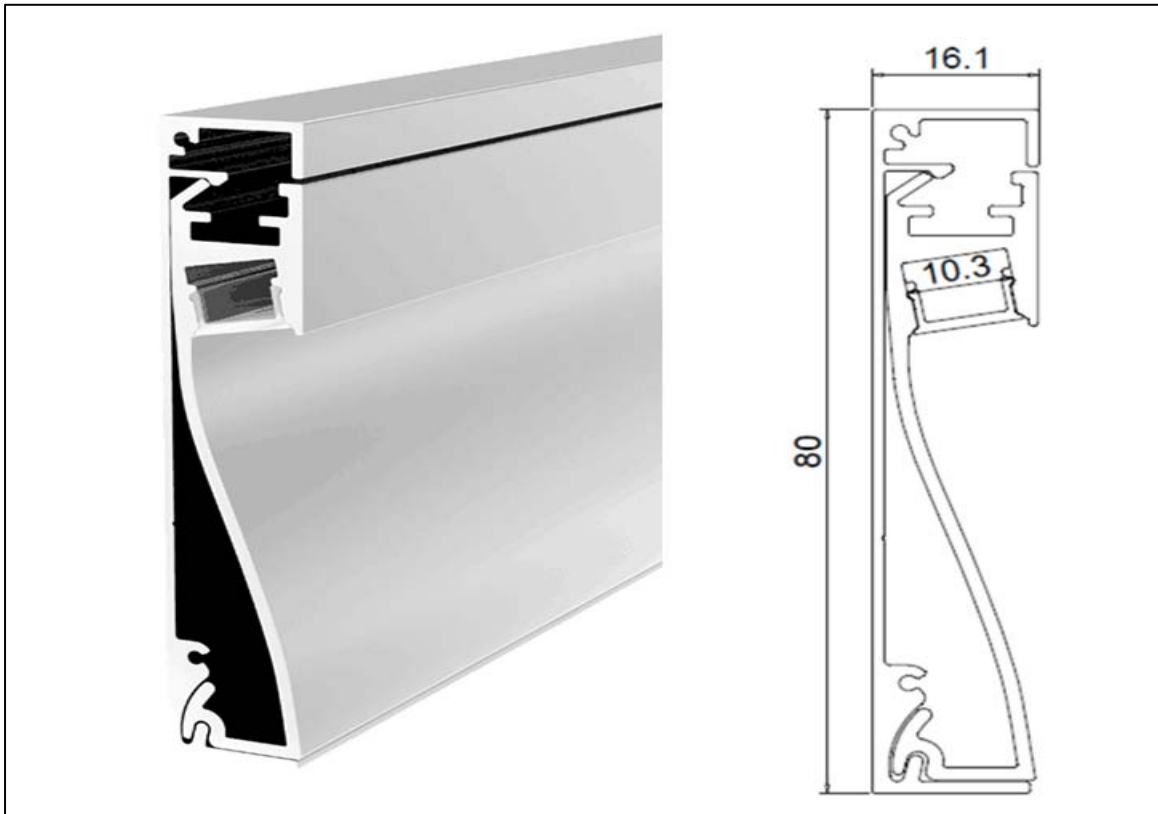
1meter profile include 1m aluminum and 1m pc cover
 1meter profile include 2 pcs end caps
 Custom color finishes available (powder coating).



COMPONENTS | ACCESSORIES

<p>MS-P8016 Plastic PC Cover</p> <p>TYPE Clear/ Diffused</p> <p>LENGTH 0.5~3meters</p>	 <p>Clear</p> <p>Diffused</p>
<p>MS-P8016 Aluminum</p> <p>MOUNT Recessed</p> <p>LENGTH 0.5~3meters</p>	
<p>MS-P8016 End Cap</p> <p>Two end caps included with every Aluminum One with a hole, another without a hole</p>	
<p>MS-P8016 other Accessories</p> <p>Corner connector 90deg outside</p>	

INSTALLATION



MS-P8016 Length led strip width surface finish

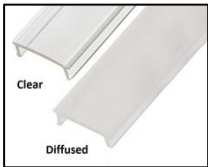


1m(standard)
2m(standard)
3m(standard)

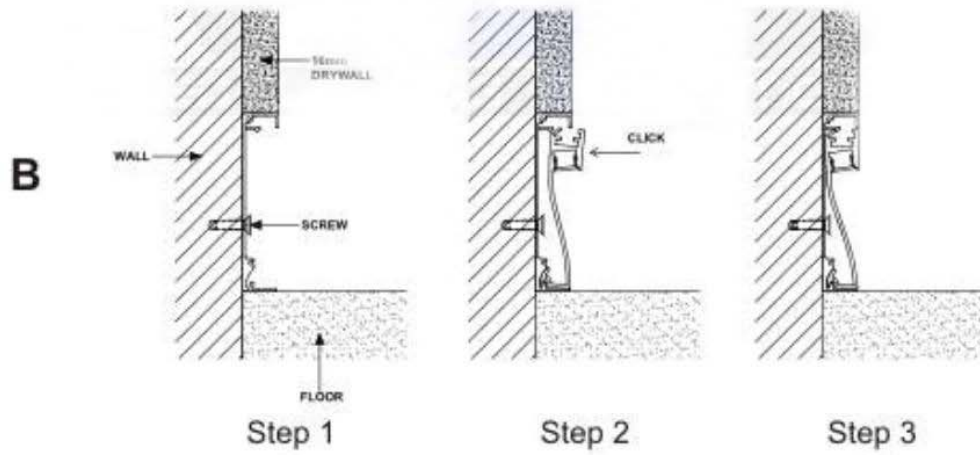
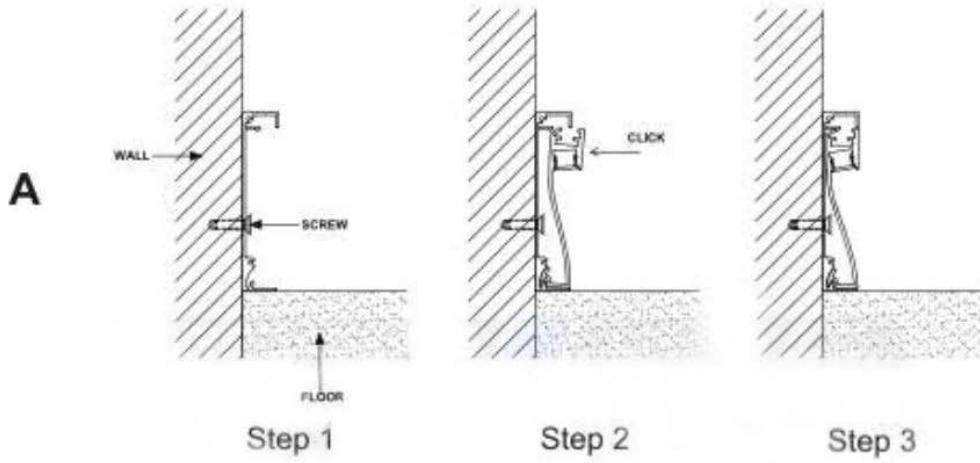
1x LED strip
Max 8mm

Anodized

Standard



Our MS-P8016 Profile is designed to be used in drywall skirting applications. The profile is anodized and there for suitable to be coated in your desired color paint. The aluminum extrusion is designed to house our LED strip or LED Tape making it easy to create your own LED Skirting Lights. The aluminum LED Track affords excellent heat sink properties to provide maximum life to your led strip lights. This profile comes in two parts, i.e. the fixing profile and the front profile.



Special features:

- Suitable for the LED Strip
- go around floor skirting (bottom of wall) to produce a glow effect
- put the Sticker to the this item to make the color you like



