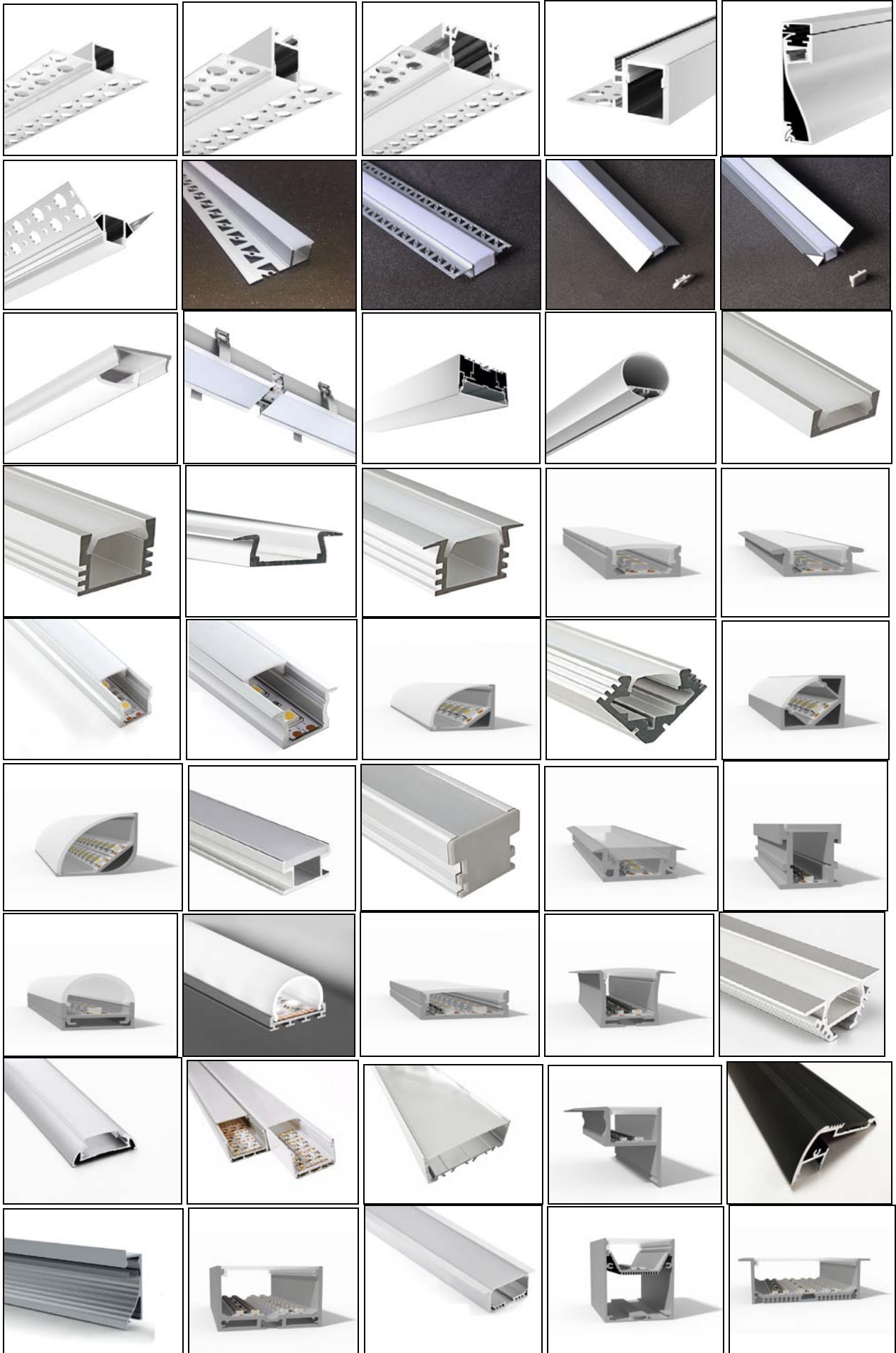


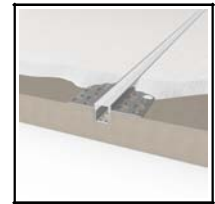
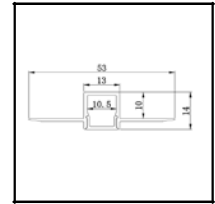
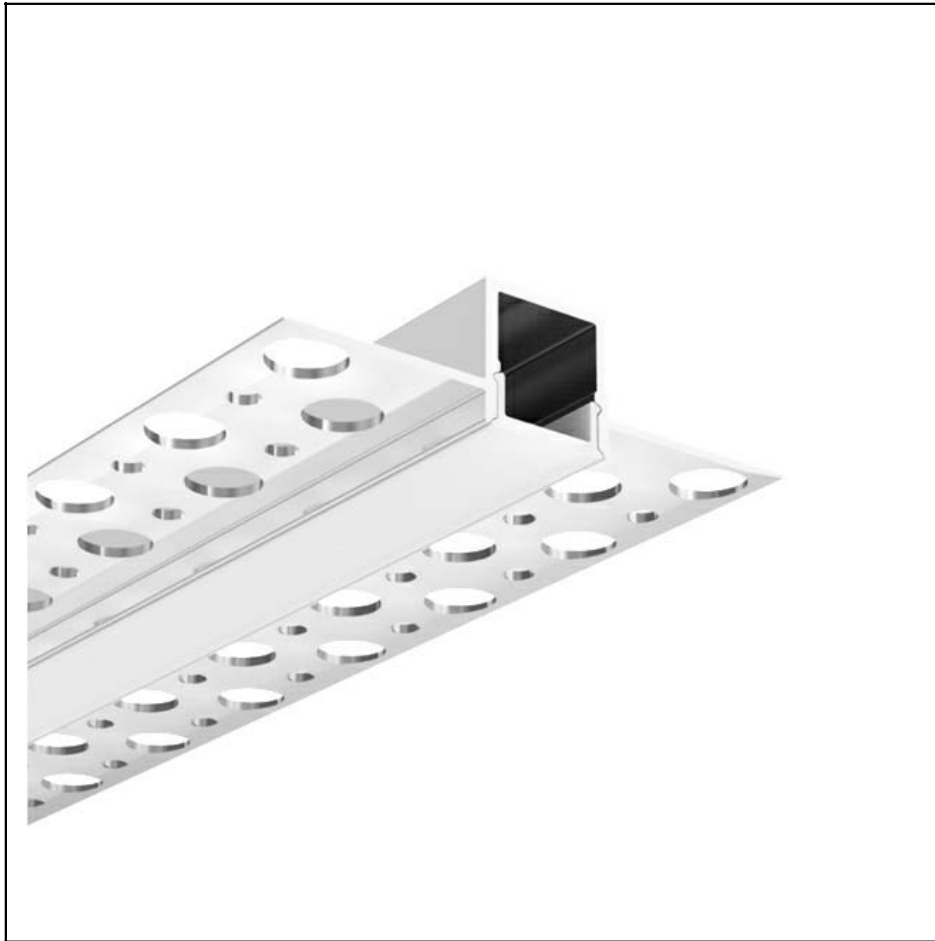


**MSD LIGHTING CO., LIMITED**



# CONTENTS





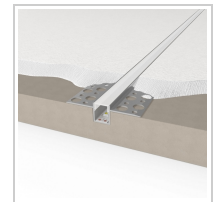
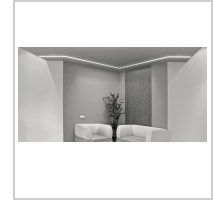
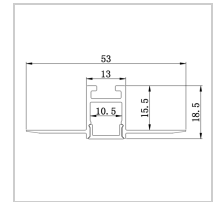
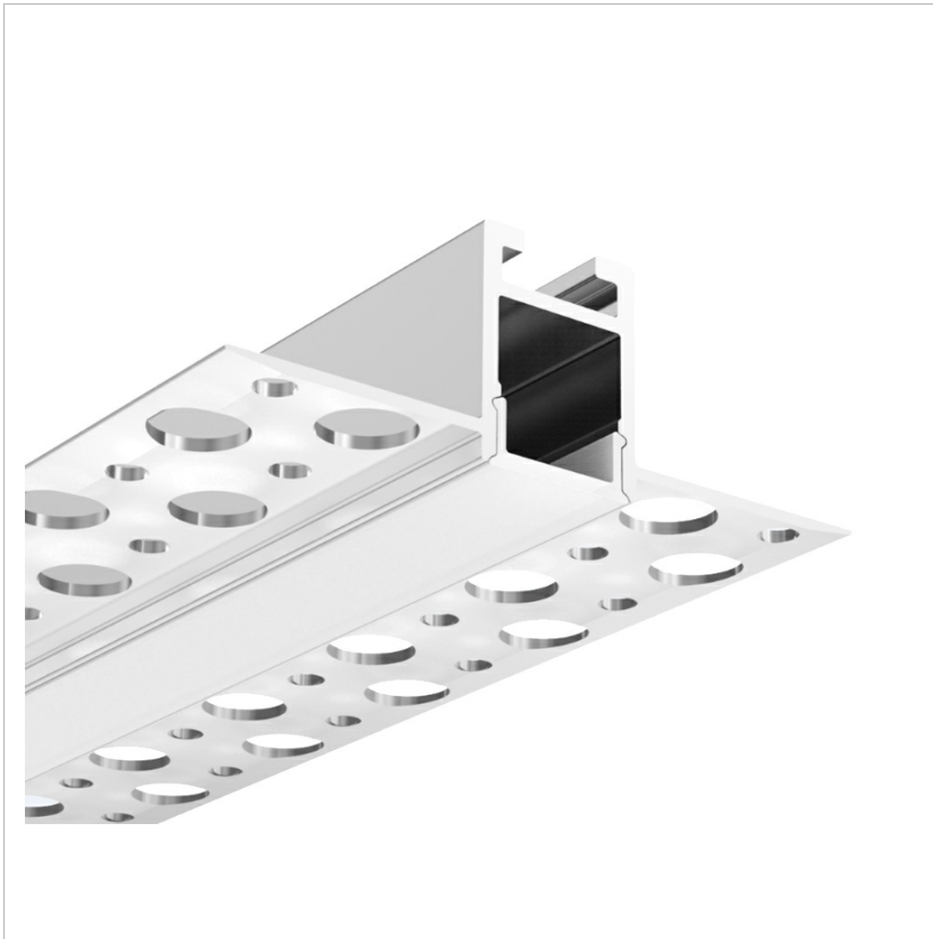
## Product Detail

Our new Plaster in LED Aluminum profile for recessing into plastered walls and ceilings for an incredible seamless diffused light output. A slim plaster profile is suitable for contemporary lighting. Suitable for 8mm led strip with a led count of no less than 120 leds per meter.

# MS-P5314

## Plaster LED Aluminum profile

length	AVAILABLE LIGHTS	PC Cover	Aluminum	Size
0.5~3m optional (Standard: 1m/2m/3m)	8mm,10mm	Clear/Diffused	6063T5 Aircraft Aluminum	W53mm*H14 mm



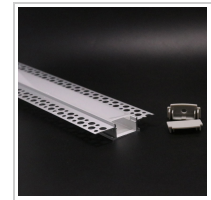
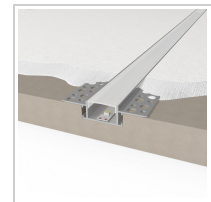
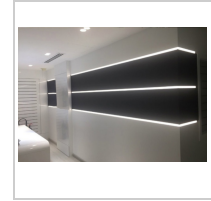
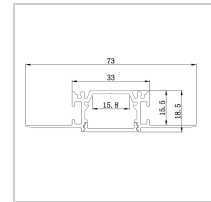
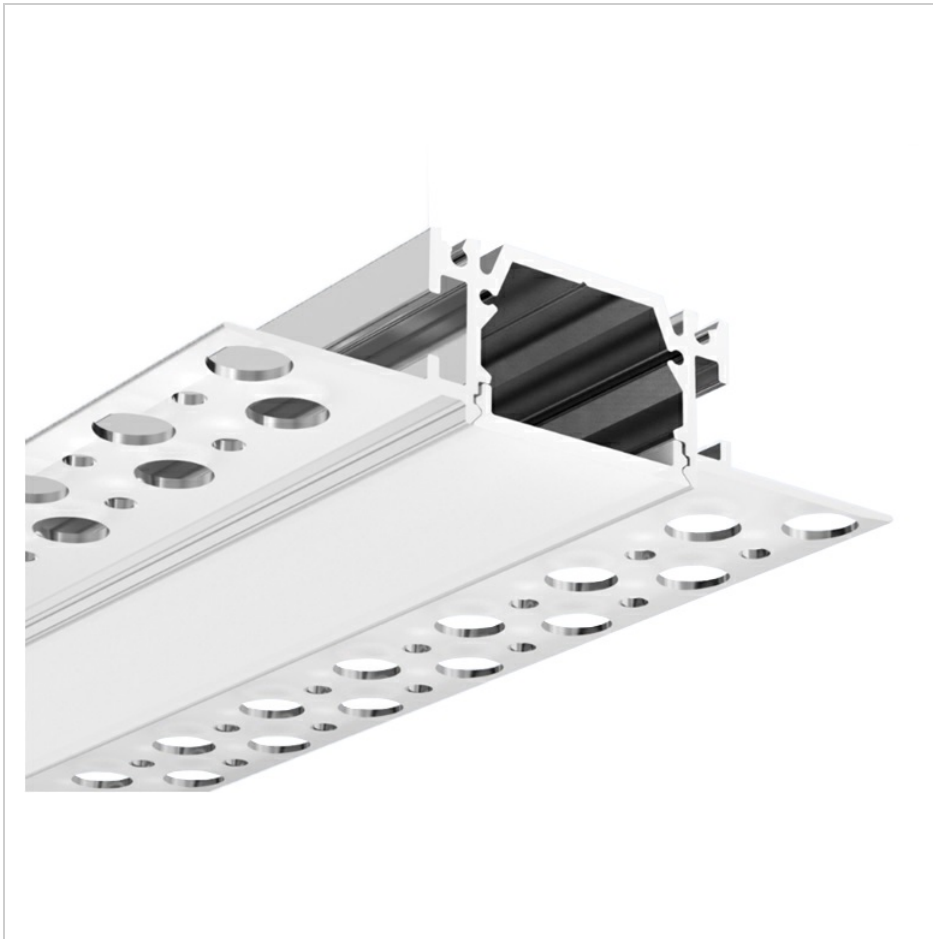
## Product Detail

Our new Plaster in LED Aluminum profile for recessing into plastered walls and ceilings for an incredible seamless diffused light output. A slim plaster profile is suitable for contemporary lighting. Suitable for 8mm led strip with a led count of no less than 120 leds per meter. it similar than the MS-P5314, but it can seamless splicing.

# MS-P5318

## Plaster Recessed LED Aluminum profile

length	AVAILABLE LIGHTS	PC Cover	Aluminum	Size
0.5~3m optional (Standard: 1m/2m/3m)	8mm,10mm	Clear/Diffused	6063T5 Aircraft Aluminum	W53mm*H18mm



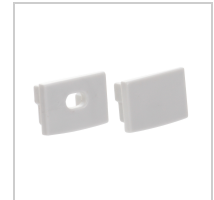
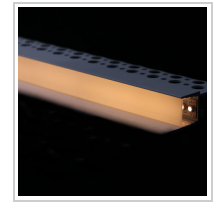
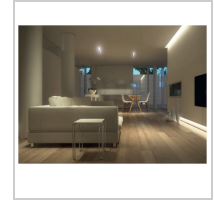
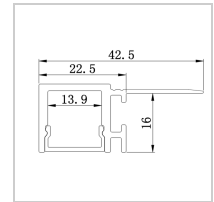
## Product Detail

New range of modern Plaster in aluminum profiles - seamless profiles for recessing into plastered walls and ceilings for an incredible seamless diffused light output. Normal LED profile will make aluminum flange on the surface, but Dry-wall LED profile gives rimless LED linear light. We believe this Dry-wall LED profile series give more elegant and delicate LED linear lighting on projects. Believe this will be good choice for your commercial lighting projects.

# MS-P7318

## Plaster Recessed LED Aluminum profile

length	AVAILABLE LIGHTS	PC Cover	Aluminum	Size
0.5~3m optional (Standard: 1m/2m/3m)	8mm,10mm,12mm, 16mm	Clear/Diffused	6063T5 Aircraft Aluminum	W73mm*H18mm



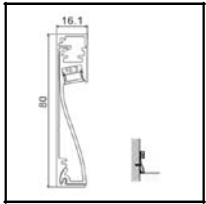
## Product Detail

Dry wall LED aluminum profile also called plaster profile or construction aluminum profile. It has become a new trend for LED linear lighting field, as it offers wonderful and clear application for the project, which has been welcomed for designer, projector or on different construction lighting fields.

# MS-P4216

## Plaster LED Aluminum Profile

length	AVAILABLE LIGHTS	PC Cover	Aluminum	Size
0.5~3m optional (Standard: 1m/2m/3m)	8mm,10mm,12mm	Clear/Diffused	6063T5 Aircraft Aluminum	W42mm*H16mm



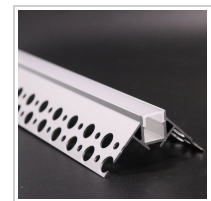
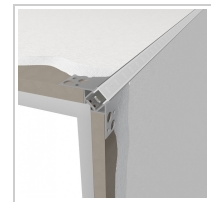
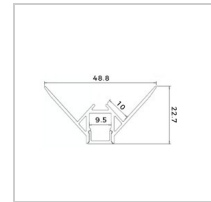
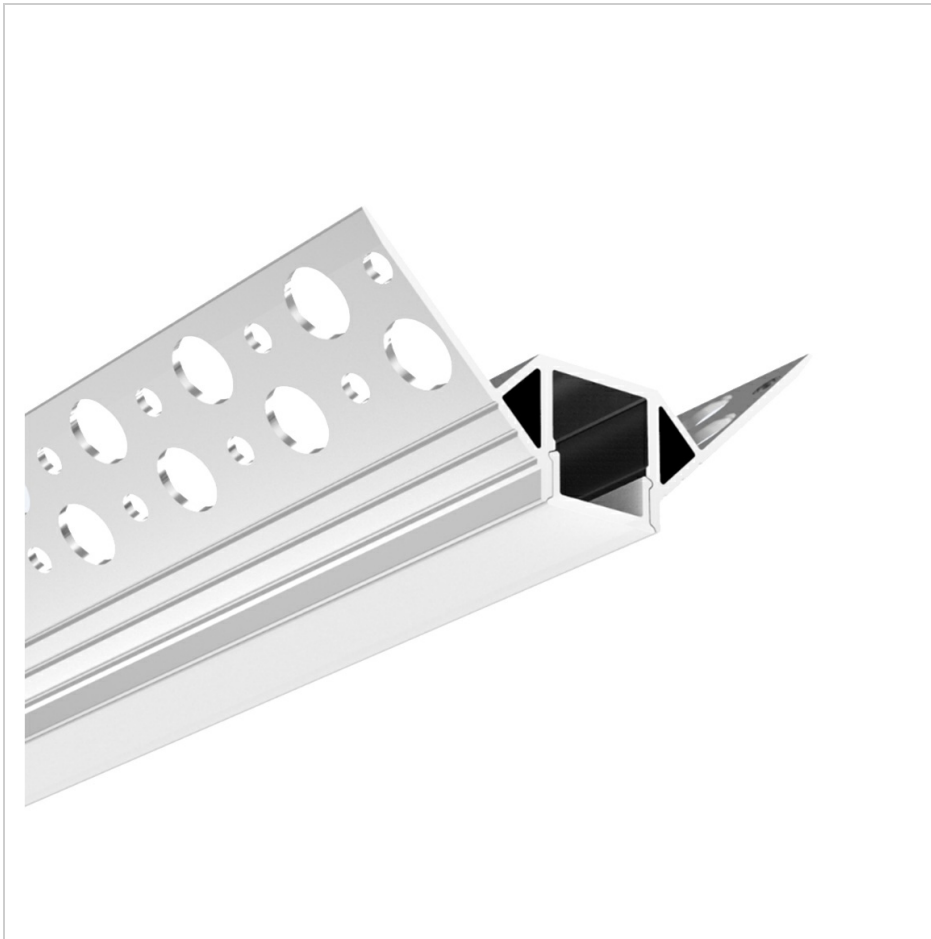
## Product Detail

Our MS-P8016 Profile is designed to be used in drywall skirting applications. The profile is anodized and therefore suitable to be coated in your desired color paint. The aluminum extrusion is designed to house our LED strip or LED Tape making it easy to create your own LED Skirting Lights. The aluminum LED Track affords excellent heat sink properties to provide maximum life to your led strip lights. This profile comes in two parts, the fixing profile and the front profile.

# MS-P8016

## LED Skirting Profile

length	AVAILABLE LIGHTS	PC Cover	Aluminum	Size
0.5~3 meter Optional (standard: 1m,2m,3m)	8mm,10mm	clear/diffused	6063 T5 Aircraft Aluminum	W80mm*H16mm



## Product Detail

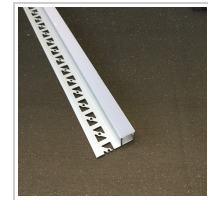
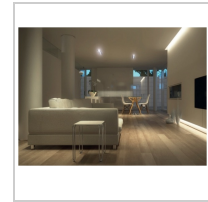
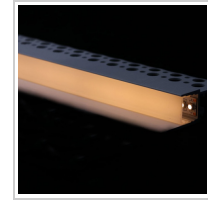
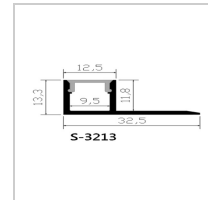
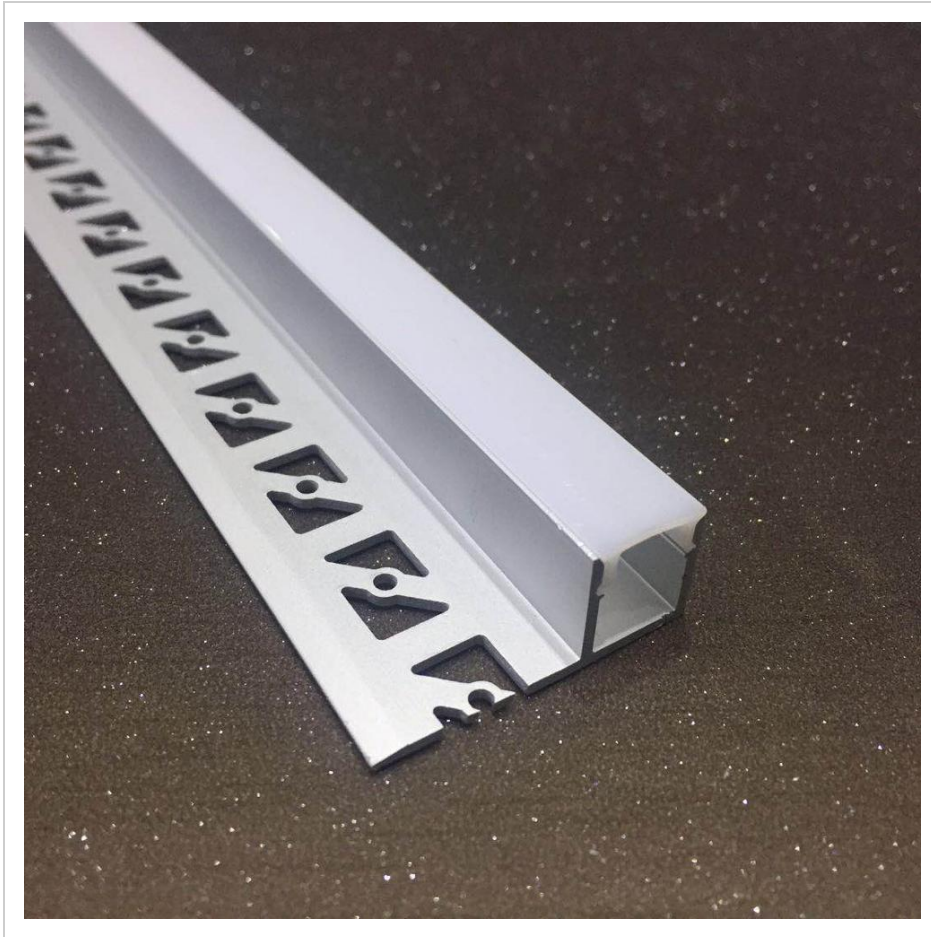
Designed with 45° angle to fit on an outer edge of a wall. Seamless effect corner edge profile designed to plaster in to plaster board. Simply leave a gap in the board or cut out, secure to the plaster board and plaster up for an incredible contemporary seamless rays of light.

# MS-P5022 (2)

## Plaster Corner LED Aluminum profile

length	AVAILABLE LIGHTS	PC Cover	Aluminum	Size
0.5~3m optional (Standard: 1m/2m/3m)	8mm,10mm	Clear/Diffused	6063T5 Aircraft Aluminum	W50mm*H22mm





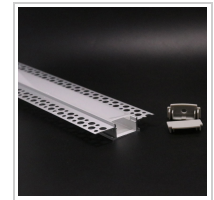
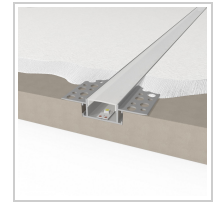
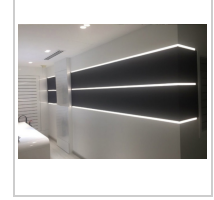
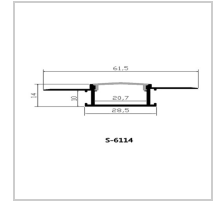
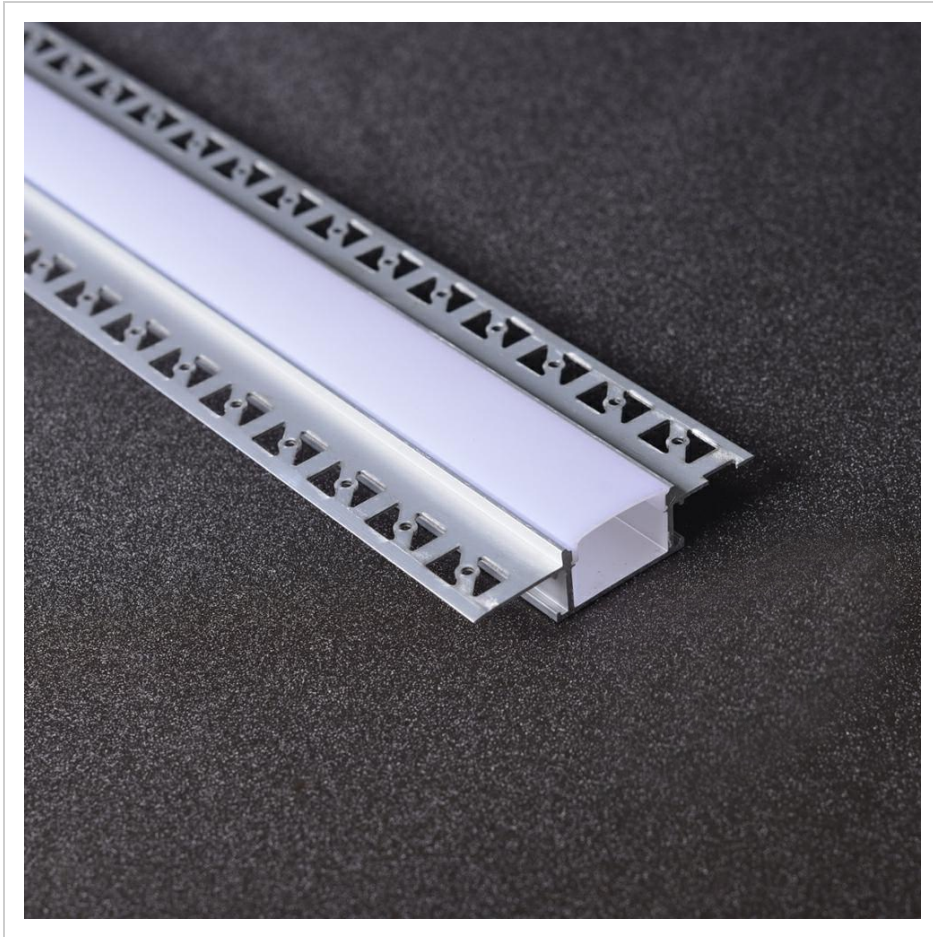
## Product Detail

Dry wall LED aluminum profile also called plaster profile or construction aluminum profile. It become a new trend for LED linear lighting field, as it offers wonderful and clear application for the project, which has been welcomed for designer, project or on different construction lighting fields.

# MS-P3213

## Plaster LED Aluminum Profile

length	AVAILABLE LIGHTS	PC Cover	Aluminum	Size
0.5~3m optional (Standard: 1m/2m/3m)	8mm	Clear/Milk	6063T5 Aircraft Aluminum	W32mm*H13mm



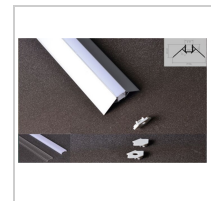
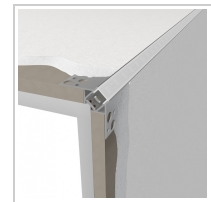
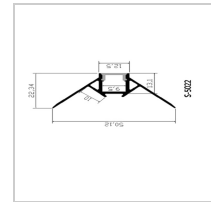
## Product Detail

New range of modern Plaster in aluminum profiles - seamless profiles for recessing into plastered walls and ceilings for an incredible seamless diffused light output. Normal LED profile will make aluminum flange on the surface, but Dry-wall LED profile gives rimless LED linear light. We believe this Dry-wall LED profile series give more elegant and delicate LED linear lighting on projects.

# MS-P6114

## Plaster Recessed LED Aluminum profile

length	AVAILABLE LIGHTS	PC Cover	Aluminum	Size
0.5~3m optional (Standard: 1m/2m/3m)	8mm,10mm,12mm, 16mm	Clear/Milk	6063T5 Aircraft Aluminum	W61mm*H14mm



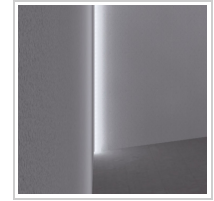
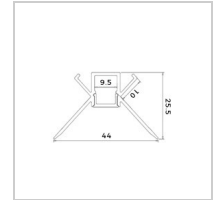
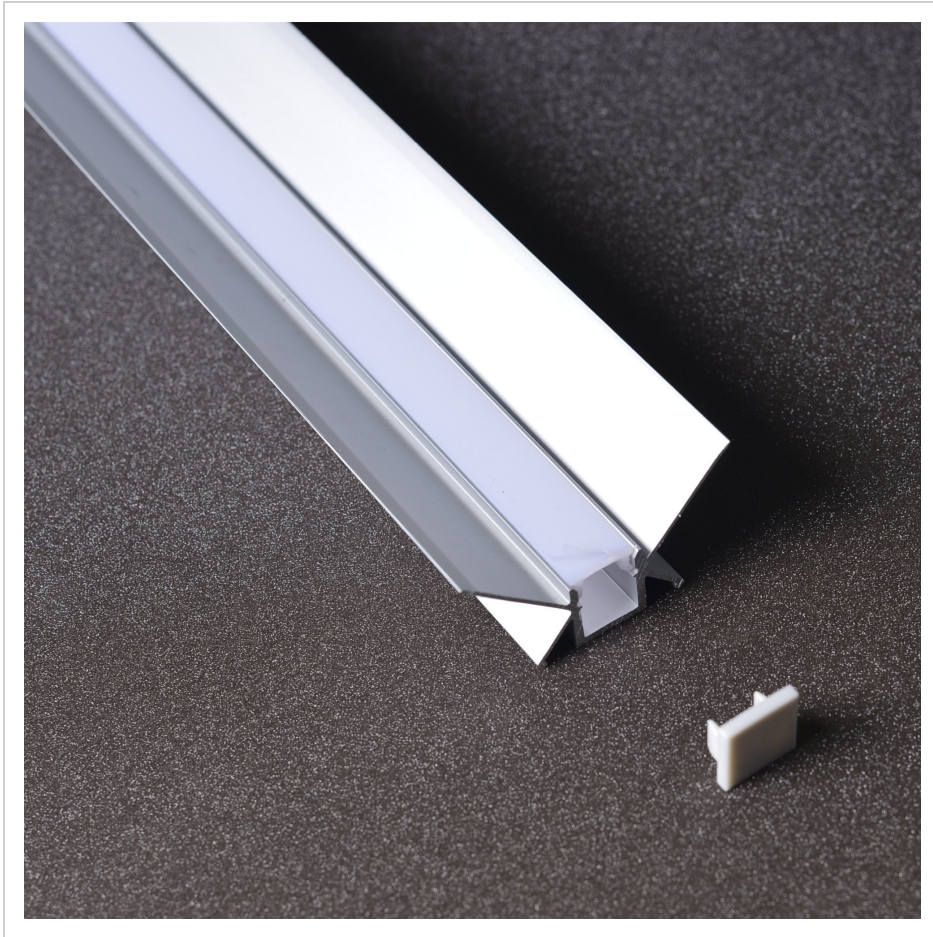
## Product Detail

Designed with 45° angle to fit on an outer edge of a wall. Seamless effect corner edge profile designed to plaster in to plaster board. Simply leave a gap in the board or cut out, secure to the plaster board and plaster up for an incredible contemporary seamless rays of light.

# MS-P5022

## Plaster Corner LED Aluminum profile

length	AVAILABLE LIGHTS	PC Cover	Aluminum	Size
0.5~3m optional (Standard: 1m/2m/3m)	8mm	Clear/Milk	6063T5 Aircraft Aluminum	W50mm*H22mm



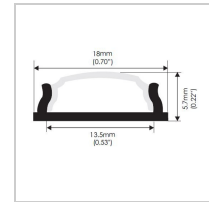
## Product Detail

Designed with 45° angle to fit on an inside edge of a wall. Seamless effect corner edge profile designed to plaster in to plaster board. Simply leave a gap in the board or cut out, secure to the plaster board and plaster up for an incredible contemporary seamless rays of light.

# MS-P4525

## Plaster Corner LED Aluminum profile

length	AVAILABLE LIGHTS	PC Cover	Aluminum	Size
0.5~3m optional (Standard: 1m/2m/3m)	8mm	Clear/Milk	6063T5 Aircraft Aluminum	W45mm*H25mm



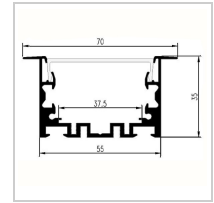
## Product Detail

Bendable Aluminum LED Profile (MS-P1806) is an ideal for bending situation, because it can be bent and shaped to the surface that is non-linear making installation easier for curved shapes. Made from high quality Aviation 6063-T5 aircraft aluminum and Anodized, and can be used with Genesis One Lighting's LED strips that are 8~12mm wide.

# MS-P1806

## Bendable LED Aluminum Profile

length	AVAILABLE LIGHTS	PC Cover	Aluminum	Size
0.5~3m optional (Standard: 1m/2m/3m)	8mm,10mm,12mm	Clear/Diffused/Milk	6063T5 Aircraft Aluminum	W18mm*H6mm



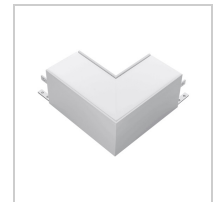
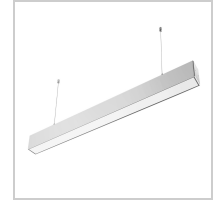
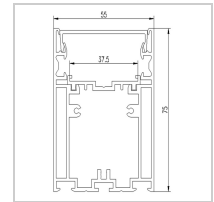
## Product Detail

The L7035 is an Architectural Grade LED extrusion profile designed for linear LED strips up to 37mm width. Made from high quality Aluminum, these extrusions provide superior thermal management for higher wattage LED strips and prolong the lifespan of your lighting system.

# MS-L7035

## Seamless Splicing Recessed LED Aluminum Profile

length	AVAILABLE LIGHTS	PC Cover	Aluminum	Size
0.5~3m optional (Standard: 1m/2m/3m)	8mm, 10mm, 12mm, 16mm	Clear/Diffused	6063T5 Aircraft Aluminum	W70mm*H35mm



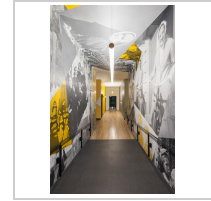
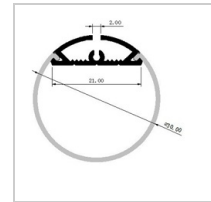
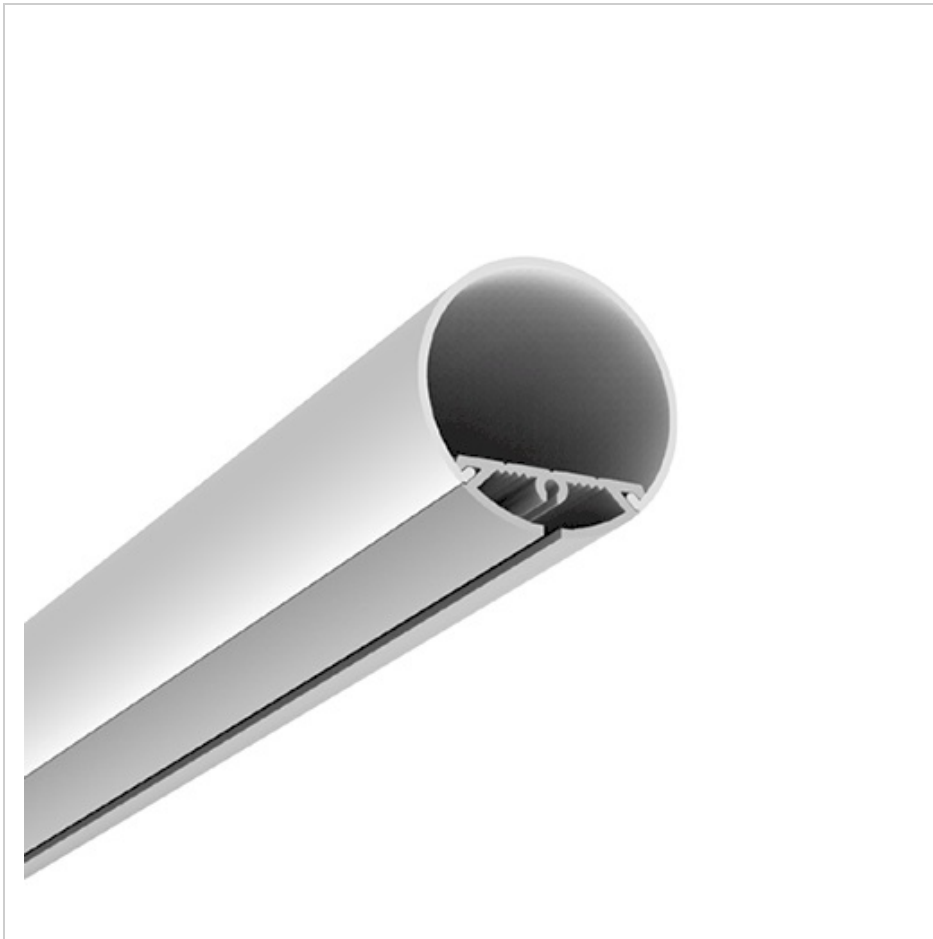
## Product Detail

The L7555 is an Suspension LED extrusion profile designed for liner LED strips up to 37mm width h. Made from high quality Aluminum, these extrusions provide superior thermal management for higher wattage LED strips and prolong the lifespan of your lighting system.

# MS-L7555

## Seamless Splicing Suspension LED Aluminum Profile

length	AVAILABLE LIGHTS	PC Cover	Aluminum	Size
0.5~3m optional (Standard: 1m/2m/3m)	8mm,10mm,12mm, 16mm	Clear/Diffused	6063T5 Aircraft Aluminum	W75mm*H55mm



## Product Detail

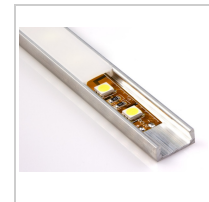
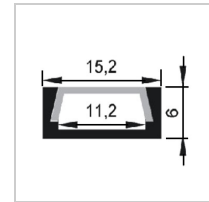
O3030 is a deep profile of a circular shape, which is most commonly used for the manufacture of linear LED fixtures on suspensions, and mounting installation. and it mainly used as the main lighting fixtures on offices or supermarket and home lighting etc.

# MS-O3030

## Round LED Aluminum Profile

length	AVAILABLE LIGHTS	PC Cover	Aluminum	Size
0.5~3m optional (Standard: 1m/2m/3m)	8mm,10mm,12mm, 16mm	Clear/Diffused	6063T5 Aircraft Aluminum	W30mm*H30mm





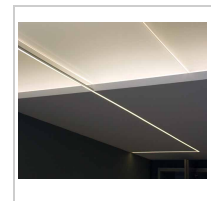
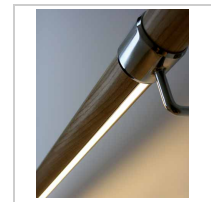
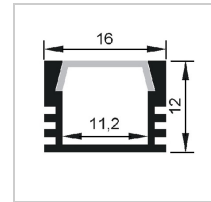
## Product Detail

The MS-P1506 is a small type, it can be installed with the LED strip which PCB board less than 11 mm like SMD 2835,SMD3528 and so on. It is designed as a recessed or surface mounting, it can be used on many situation. Like on the wall, the ceiling, the floor,surface of desk , shelves, step, niches etc. it all depends on your imagination.

# MS-P1506

## Slim LED Aluminum Profile

length	AVAILABLE LIGHTS	PC Cover	Aluminum	Size
0.5~3meter optional, 1m, 2m, 3m (standard)	8mm,10mm	Clear/Diffused/Milk	6063T5 Aircraft Aluminum	



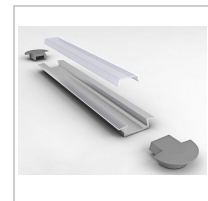
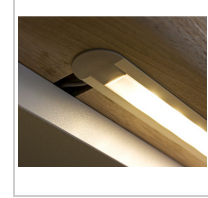
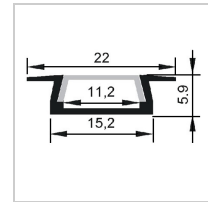
## Product Detail

LED profile MS-P1612 ,this LED Aluminum profile can be used as mortise or surface mounted, This type have a better effect on heat sink with the wave designed on the two side. When we install this type with strip of SMD3520-120LEDs can light with no spot effect.

# MS-P1612

## U Shaped LED Aluminum Profile

length	AVAILABLE LIGHTS	PC Cover	Aluminum	Size
0.5~3m optional (Standard: 1m/2m/3m)	8mm,10mm	Clear/Diffused/Milk	6063T5 Aircraft Aluminum	W16mm*H12mm



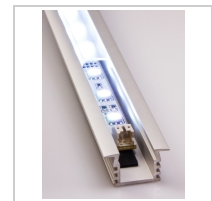
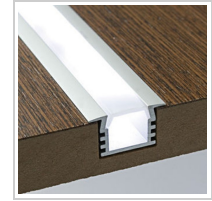
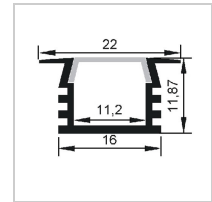
## Product Detail

The MS-P2206 is an Architectural Grade LED extrusion profile designed for linear LED strips up to 11mm wide. Made from high quality aluminum, these extrusions provide superior thermal management for higher wattage LED strips and prolong the overall lifetime of your lighting system. The MS-P2206 is manufactured with a patented milky PC cover for maximum lumen output and wide beam distribution.

# MS-P2206

## Recessed LED Aluminum Profile

length	AVAILABLE LIGHTS	PC Cover	Aluminum	Size
0.5~3m (Standard: 1m/2m/3m)	8mm,10mm	Clear/Diffused/Milk	6063T5 Aircraft Aluminum	W22mm*H6mm



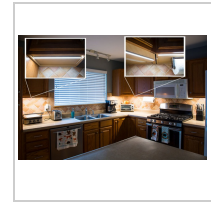
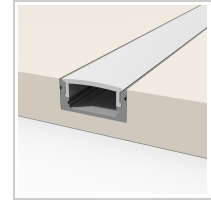
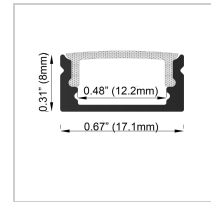
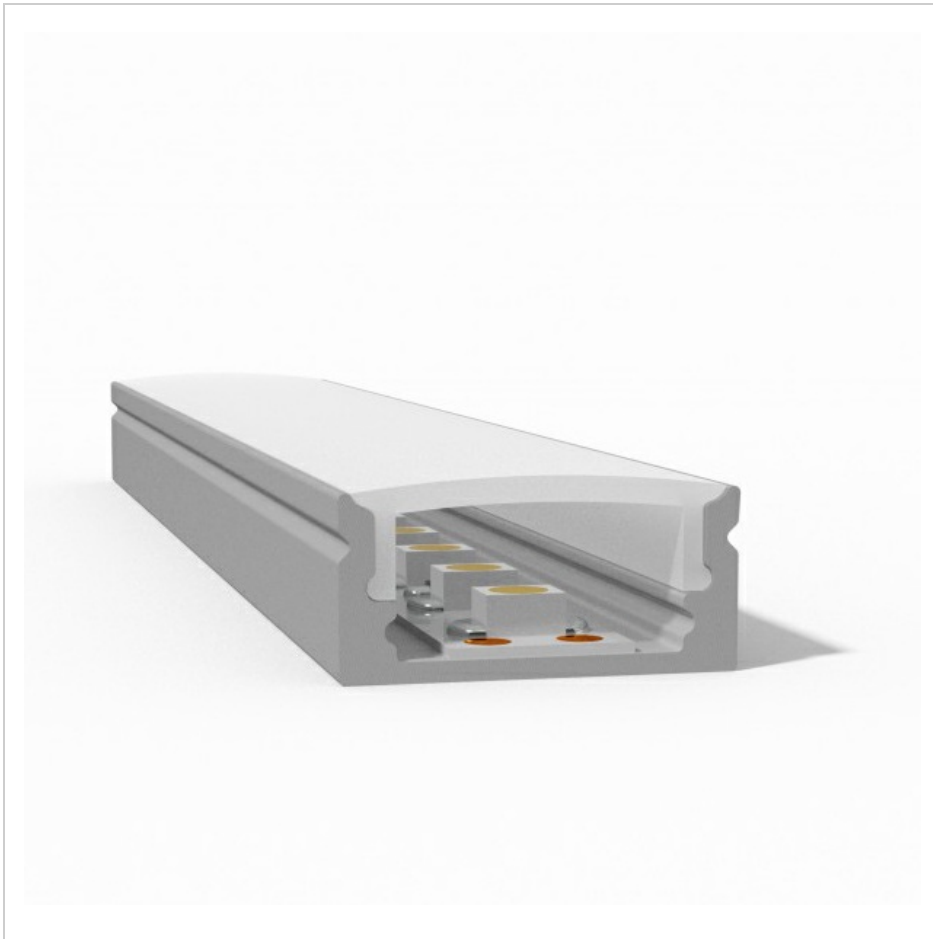
## Product Detail

This aluminum profile can be used as mortise or mounting installation LED profile MS-P2212 is virtually identical to the profile of the MS-P1612, just the former one has an edge. When installed in this profile LED strip SMD 3528-120 using milk PC cover - you will achieve a uniform line of light, without any point

# MS-P2212

## Recessed LED Aluminum Profile

length	AVAILABLE LIGHTS	PC Cover	Aluminum	Size
0.5~3m (Standard: 1m/2m/3m)	8mm,10mm	Clear/Diffused/Milk	6063T5 Aircraft Aluminum	W22mm*H12mm



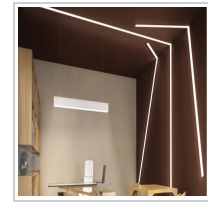
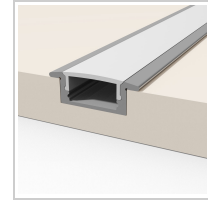
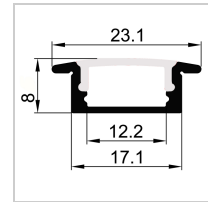
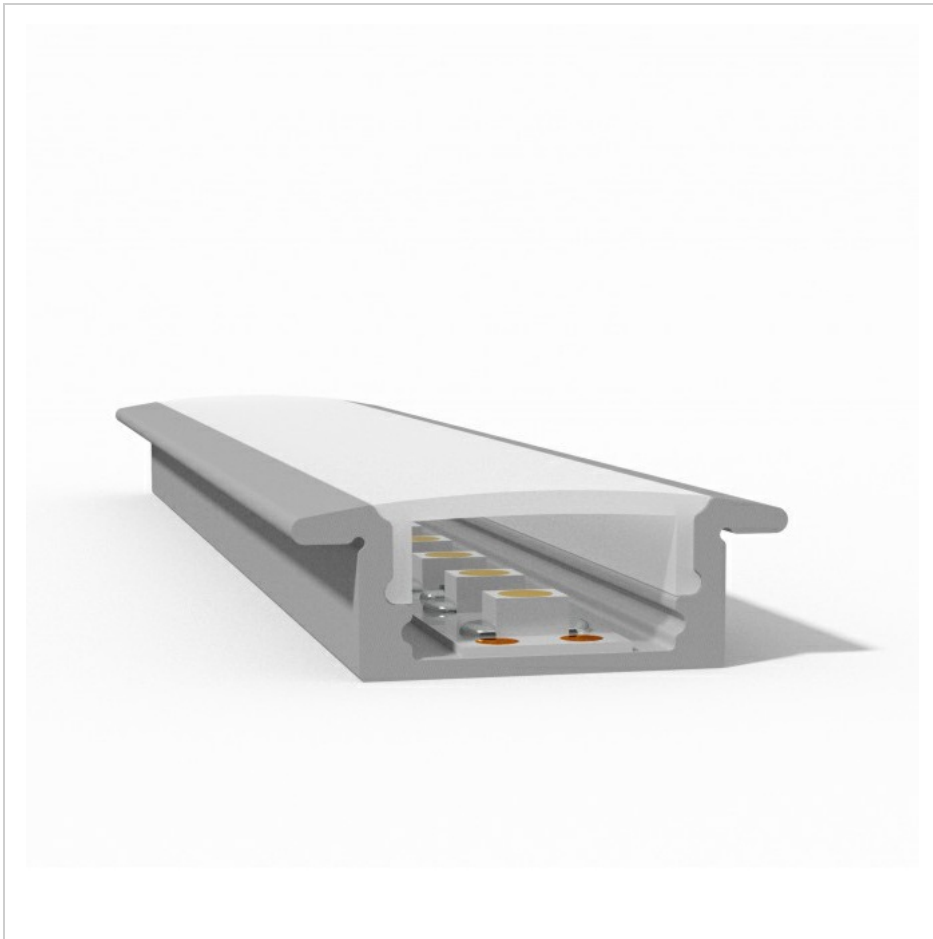
## Product Detail

Its scope is limited only by your imagination. The profile can be activated to create decorative glowing bands in the wall, ceiling, floor, working surfaces, shelves, steps, niches, front lighting glass etc.

# MS-P1707D

## Slim LED Aluminum Profile

length	AVAILABLE LIGHTS	PC Cover	Aluminum	Size
0.5~3m optional (Standard: 1m/2m/3m)	8mm,10mm,12mm	Clear/Diffused/Milk	6063T5 Aircraft Aluminum	W17mm*H7mm



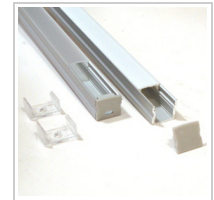
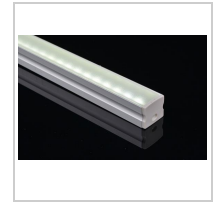
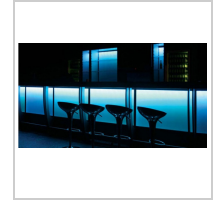
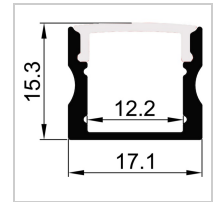
## Product Detail

- its scope is limited only by your imagination. - installing with flexible or hard LED strips that are 8-12.8mm wide (0.50") - eliminates obstacles related to LED light strip mounting - used as interior lighting, corner mount extrusion: walls, furniture, work surfaces, steps

# MS-P2507C

## Recessed LED Aluminum Profile

length	AVAILABLE LIGHTS	PC Cover	Aluminum	Size
0.5~3m (Standard: 1m/2m/3m)	8mm,10mm,12mm	Clear/Diffused/Milk	6063T5 Aircraft Aluminum	W25mm*H7mm



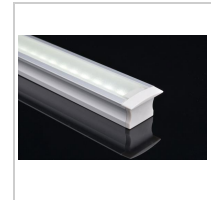
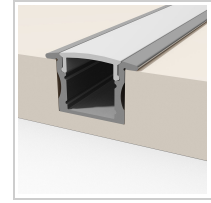
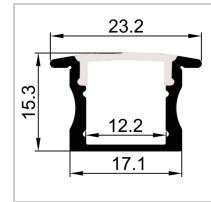
## Product Detail

Installation with flexible or hard LED strips that width is 8-12mm (0.50") This type is designed to recessed or surface mounted, such as door,wall, furniture,kitchen,cabinet etc

# MS-P1715B

## U Shaped LED Aluminum Profile

length	AVAILABLE LIGHTS	PC Cover	Aluminum	Size



## Product Detail

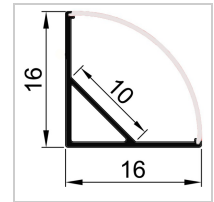
These aluminium channels not only act as a heat sink which reduces the light decay dramatically from the LEDs over their lifetime, but they also improve the visual finish of linear lighting installations by reducing spotting and manipulating the light output to suit an application.

# MS-P2515B

## Recessed LED Aluminum Profile

length	AVAILABLE LIGHTS	PC Cover	Aluminum	Size
0.5~3m (Standard: 1m/2m/3m)	8mm,10mm,12mm	Clear/Diffused/Milk	6063T5 Aircraft Aluminum	W25mm*15Hmm





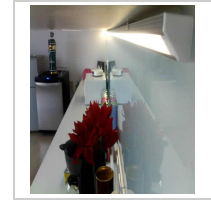
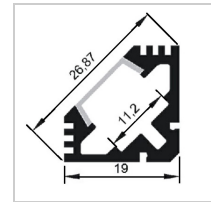
## Product Detail

This LED Aluminum profile P1616 is a popular type install on the corner with 45 degree. It comes with a rounded (quarter-circle) PC cover for uniform 45 degree light output. and it is a perfect solution for under-cabinet, in-cabinet, and over cabinet linear LED lighting and so on

# MS-P1616

## Triangular LED Aluminum Profile

length	AVAILABLE LIGHTS	PC Cover	Aluminum	Size
0.5~3m optional (Standard: 1m/2m/3m)	8mm,10mm,12mm	Clear/Diffused/Milk	6063T5 Aircraft Aluminum	W16mm*H16mm



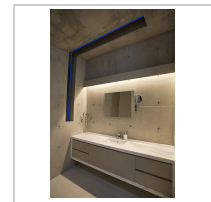
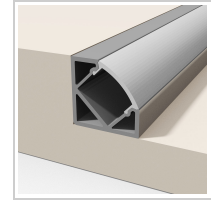
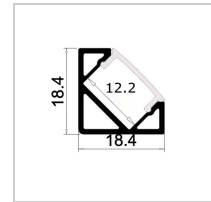
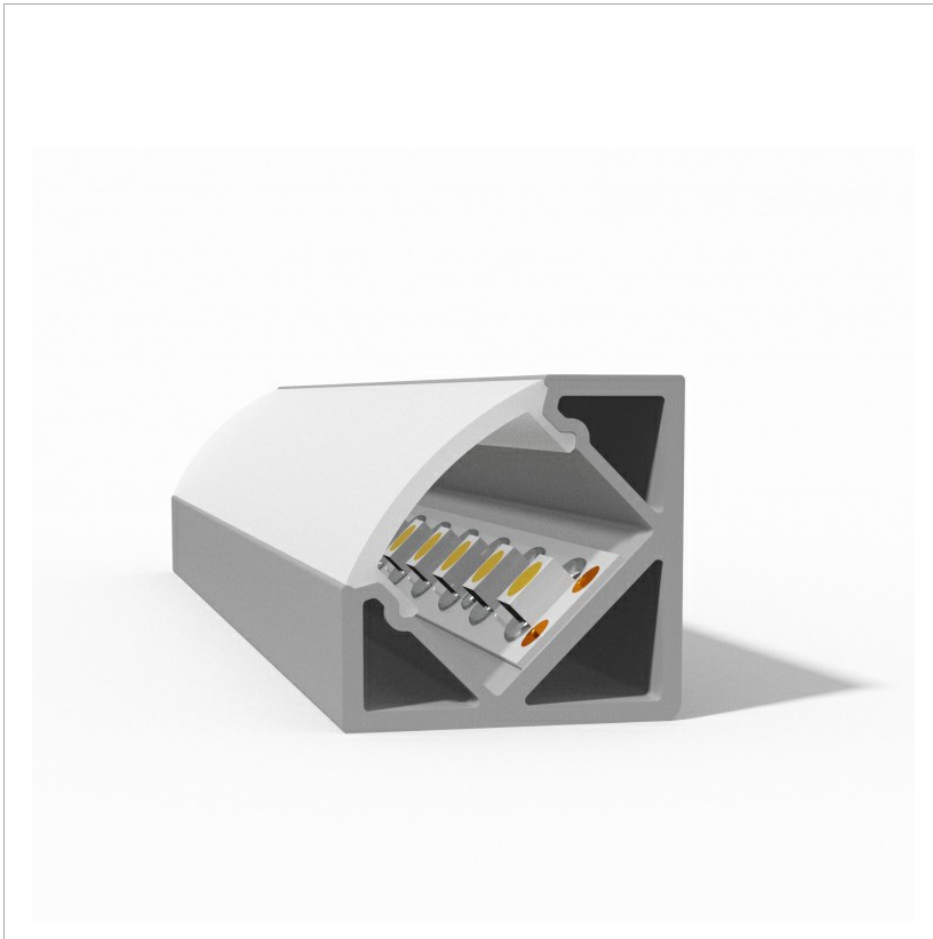
## Product Detail

Designed for mounting the LED light source at an angle of 45 degrees, This item P1919 allows to effect of linear light on the corner, and for the thick Aluminum profile protects strip from people damage. and also this profile directs the light beam to the object illumination and prevents it in people's eyes.

# MS-P1919

## Triangular LED Aluminum Profile

length	AVAILABLE LIGHTS	PC Cover	Aluminum	Size
0.5~3m (Standard: 1m/2m/3m)	8mm,10mm,12mm	Clear/Diffused/Milk	6063T5 Aircraft Aluminum	W19mm*H19mm



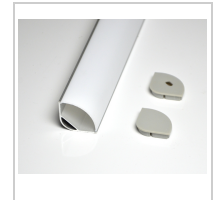
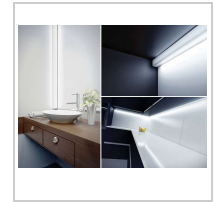
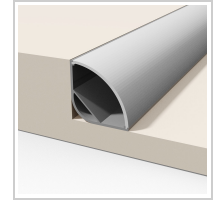
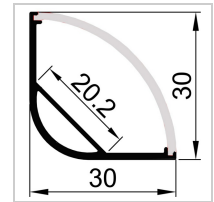
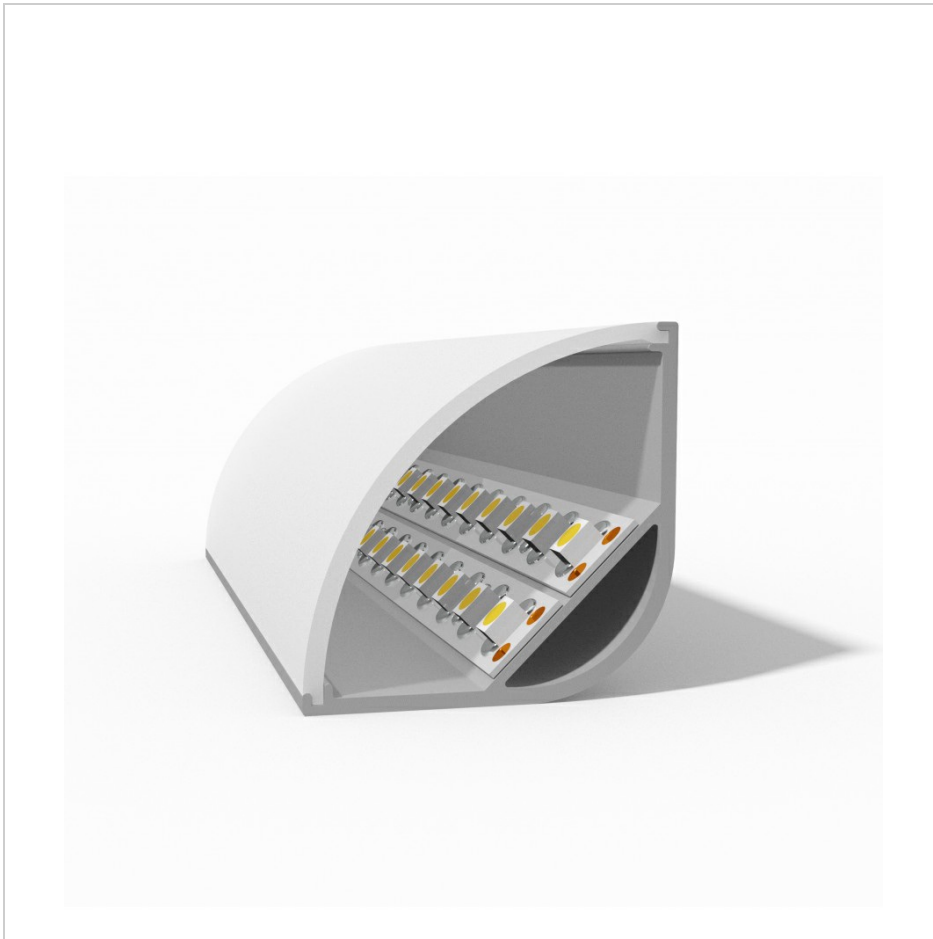
## Product Detail

MS-P1919F used for the production of lamps for the lighting of the gallery of paintings and other exhibits. This type is often used to installed on the shopping marts, especially showcases jewelry stores, furniture for illumination, and sometimes, in the interior illumination.

# MS-P1919F

## Triangular LED Aluminum Profile

length	AVAILABLE LIGHTS	PC Cover	Aluminum	Size
0.5~3m (Standard: 1m/2m/3m)	8mm,10mm,12mm	Clear/Diffused/Milk	6063T5 Aircraft Aluminum	W19mm*H19mm



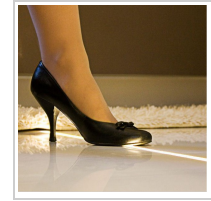
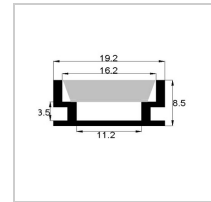
## Product Detail

This profile is also applied in galleries and exhibitions, furniture manufacturing, advertising and architecture. It comes with a rounded (quarter-circle) lens for uniform 45 degree light output.

# MS-P3030C

## Triangular LED Aluminum Profile

length	AVAILABLE LIGHTS	PC Cover	Aluminum	Size
0.5~3m optional (Standard: 1m/2m/3m)	8mm,10mm,12mm, 16mm	Clear/Diffused/Milk	6063T5 Aircraft Aluminum	W30mm*H30mm



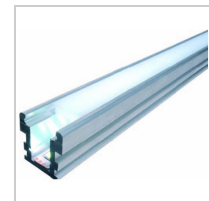
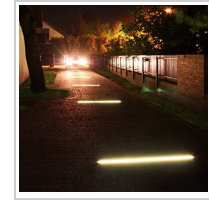
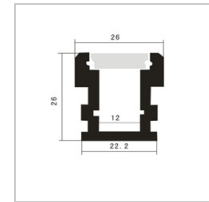
## Product Detail

Aluminum profile channel for led strip lighting up to 11mm width 0.5~3 meter lengths Optional .This PC cover is thicker than normal one, which makes it possible to recessed into floor. It will protect the led strip from being damaged and will make removing dust be an easy task. this suit for installing one the dancing room, bathroom with IP65 strip or somewhere that people walk on it.

# MS-P1908

## Waterproof LED Aluminum Profile

length	AVAILABLE LIGHTS	PC Cover	Aluminum	Size
0.5~3m optional (Standard: 1m/2m/3m)	8mm,10mm	Clear/Diffused	6063T5 Aircraft Aluminum	W19mm*H8mm



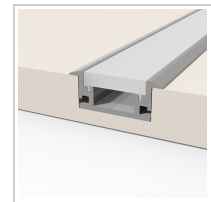
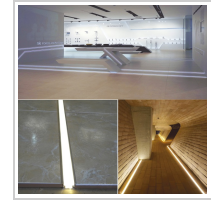
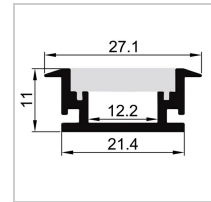
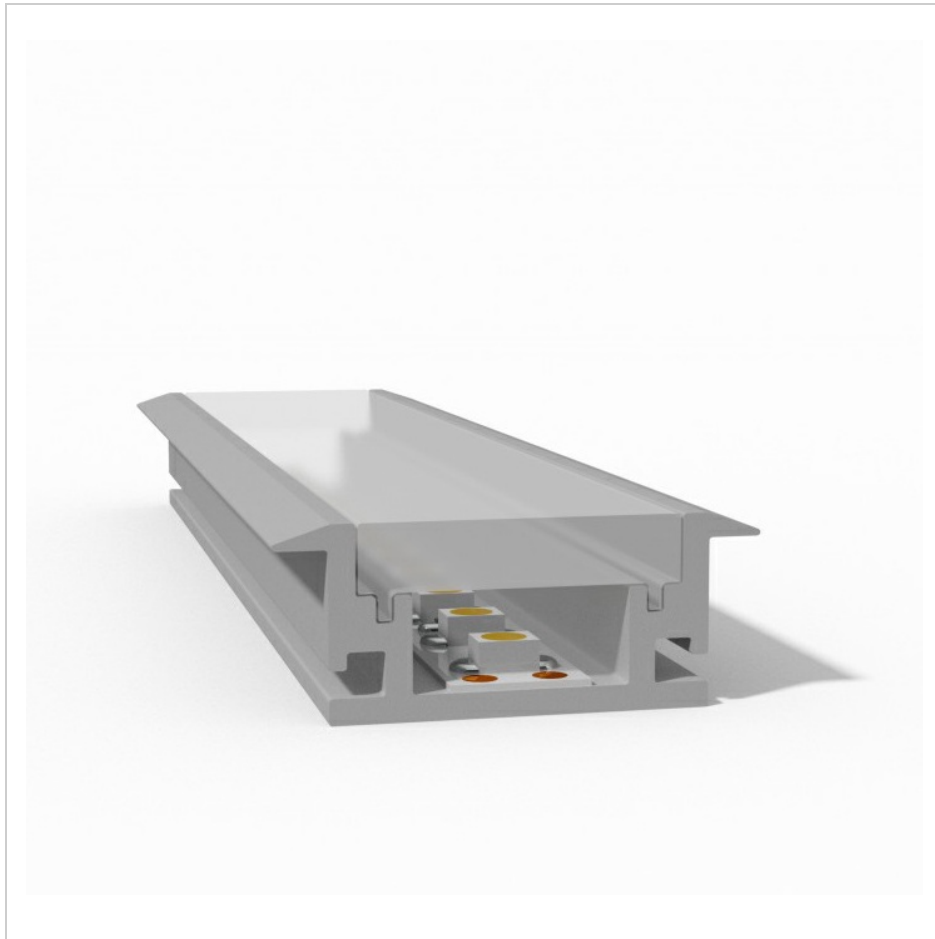
## Product Detail

Unique profile P2626 is ideal for mounting underground . There is no better solution to install lighting in the parking with a thickness PC Cover . It can be installed in a space near the pool , in the intervals of terrace boards in paving tiles , granite and ceramic plates , etc.

# MS-P2626

## Waterproof LED Aluminum Profile

length	AVAILABLE LIGHTS	PC Cover	Aluminum	Size
0.5~3m optional (Standard: 1m/2m/3m)	8mm,10mm,12mm	Clear/Diffused	6063T5 Aircraft Aluminum	W26mm*H26mm



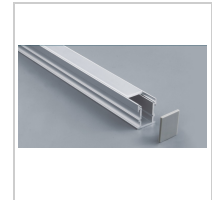
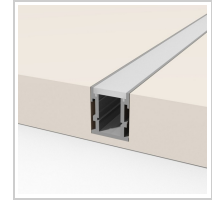
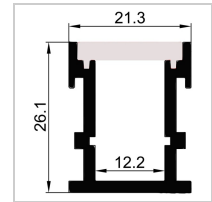
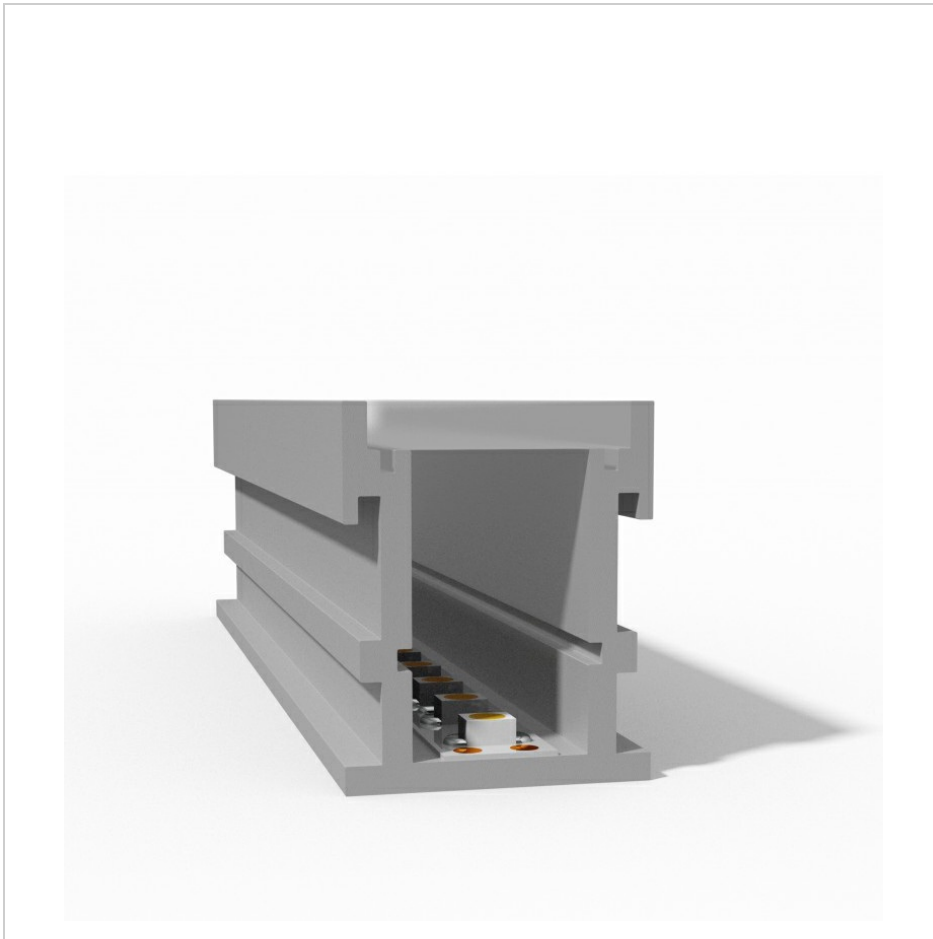
## Product Detail

Aluminium LED Profile (Extrusion) suits for LED Strip up to 12mm wide. Our "Floor Mounted" aluminium LED channel can be used with all our LED strip lights. This profile is designed for use in flooring. It's built to be stronger than our other profiles and available with a PC cover diffused cover - available separately. For customers who require longer lengths, simply butt the aluminium channels together to make the required length. Installation is designed to be as simple as possible. This profile is usually bonded into the floor, mounting clips are not available.

# MS-P2711

## Waterproof LED Aluminum Profile

length	AVAILABLE LIGHTS	PC Cover	Aluminum	Size
0.5~3m optional (Standard: 1m/2m/3m)	8mm,10mm,12mm	Clear/Diffused/Milk	6063T5 Aircraft Aluminum	W27mm*H11mm



## Product Detail

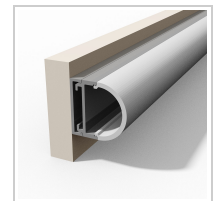
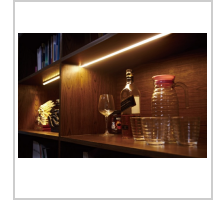
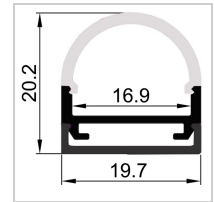
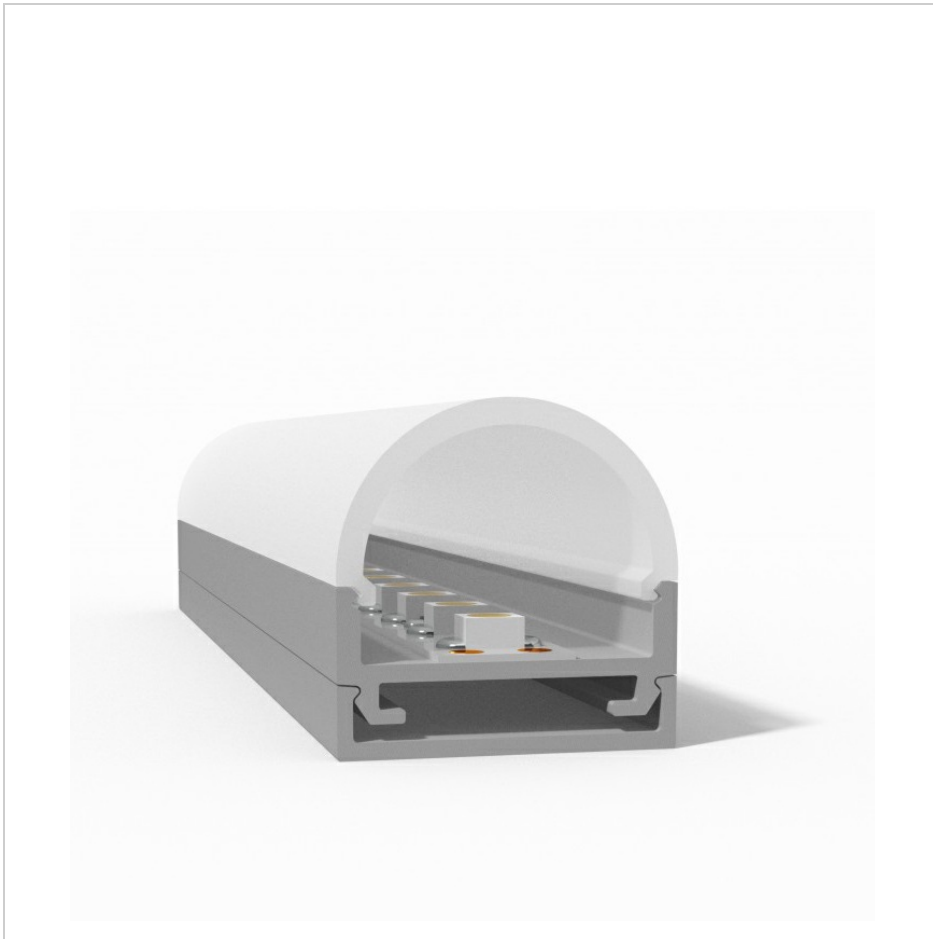
Our "Floor Mounted" aluminium LED channel can be used with all of our LED strip lights. This profile is designed using in the floor. It's built to be stronger than our other profiles and is available with a PC diffused cover. For customers who require longer lengths, simply butt the aluminium channels together to make the required length. Installation is designed to be as simple as possible. This profile is usually bonded into the floor, mounting clips are not available.

# MS-P2721

## Waterproof LED Aluminum Profile

length	AVAILABLE LIGHTS	PC Cover	Aluminum	Size
0.5~3m optional (Standard: 1m/2m/3m)	8mm,10mm,12mm	Clear/Diffused	6063T5 Aircraft Aluminum	W27mm*H21mm





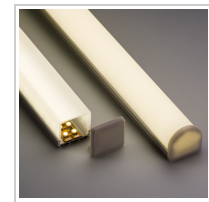
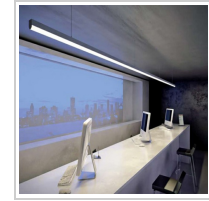
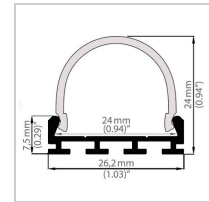
## Product Detail

The profile can be activated to create decorative glowing bands in the walls, ceiling, floor, lights, work surfaces, shelves, steps, niches, front lighting glass or acrylic, etc. This type is the first type that we promoted, and now is frequently used for architectural lighting contour.

# MS-P2019

## Round LED Aluminum Profile

length	AVAILABLE LIGHTS	PC Cover	Aluminum	Size
0.5~3m (Standard: 1m/2m/3m)	8mm,10mm,12mm, 16mm	Clear/Diffused/Milk	6063T5 Aircraft Aluminum	W20mm*H19mm



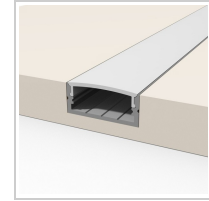
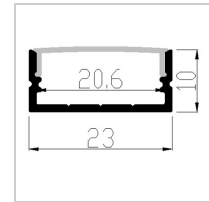
## Product Detail

- housing for flexible or hard LED strips that are 24 mm wide (0.94 ") - eliminates obstacles related to LED light strip mounting - extrusion acts as the connector between the light source and the application area and provides a stylish and finished look - extrusion can be used as a primary energy-efficient light source (due to the possibility of installing two strips inside) - indoor and outdoor (profile is not waterproof, not to be applied if directly exposed to weather conditions)

# MS-P2618

## Round LED Aluminum Profile

length	AVAILABLE LIGHTS	PC Cover	Aluminum	Size
0.5~3m (Standard: 1m/2m/3m)	8mm,10mm,12mm, 16mm	Clear/Diffused/Milk	6063T5 Aircraft Aluminum	W26mm*H18mm



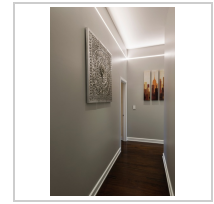
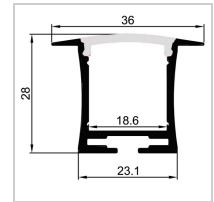
## Product Detail

- Installing with flexible or hard LED strips that are 8-20.6mm wide (0.50") - eliminates obstacles related to LED light strip mounting - extrusion acts as the connector between the light source and the application area and provides a stylish and finished look - used as interior lighting, corner mount extrusion: walls, furniture, working surfaces

# MS-P2310

## U Shaped LED Aluminum Profile

length	AVAILABLE LIGHTS	PC Cover	Aluminum	Size
0.5~3m (Standard: 1m/2m/3m)	8mm,10mm,12mm, 16mm	Clear/Diffused/Milk	6063T5 Aircraft Aluminum	W23mm*H10mm



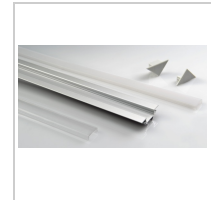
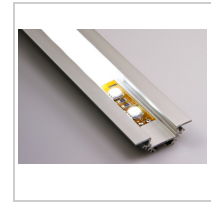
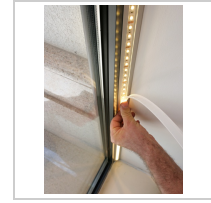
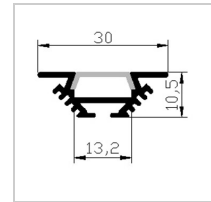
## Product Detail

This type have a deep height, can be installed with many LED strip on the ceiling, and it have 2 or 3 meter optional, and of course it can be lighted with no spot light.

# MS-P3628

## Recessed LED Aluminum Profile

length	AVAILABLE LIGHTS	PC Cover	Aluminum	Size
0.5~3m optional (Standard: 1m/2m/3m)	8mm,10mm,12mm, 16mm	Clear/Diffused/Milk	6063T5 Aircraft Aluminum	W36mm*H28mm



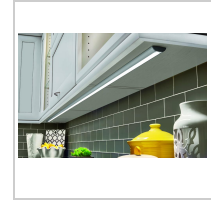
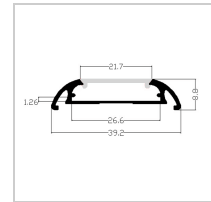
## Product Detail

Profile angled mounting P3010, is mainly used to illuminate the windows. Installation of lighting is very simple and requires no special skills.

# MS-P3010

## Triangular LED Aluminum Profile

length	AVAILABLE LIGHTS	PC Cover	Aluminum	Size
0.5~3m optional (Standard: 1m/2m/3m)	8mm,10mm,12mm	Clear/Diffused/Milk	6063T5 Aircraft Aluminum	W30mm*H10mm



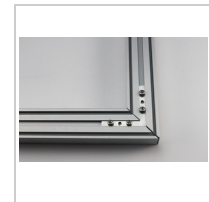
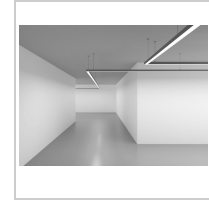
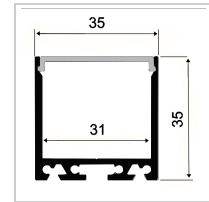
## Product Detail

Profile P4008 is surface-mounted type, its beauty is limited only by your imagination. It's a versatile and sleek profile designed to act as a heat sink and housing for our 8mm, 10mm, or 12mm LED Strip Lights.

# MS-P4008

## Surface LED Aluminum Profile

length	AVAILABLE LIGHTS	PC Cover	Aluminum	Size
0.5~3m optional (Standard: 1m/2m/3m)	8mm,10mm,12mm, 16mm	Clear/Diffused	6063T5 Aircraft Aluminum	W40mm*H8mm



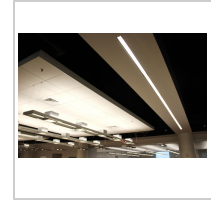
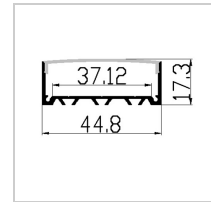
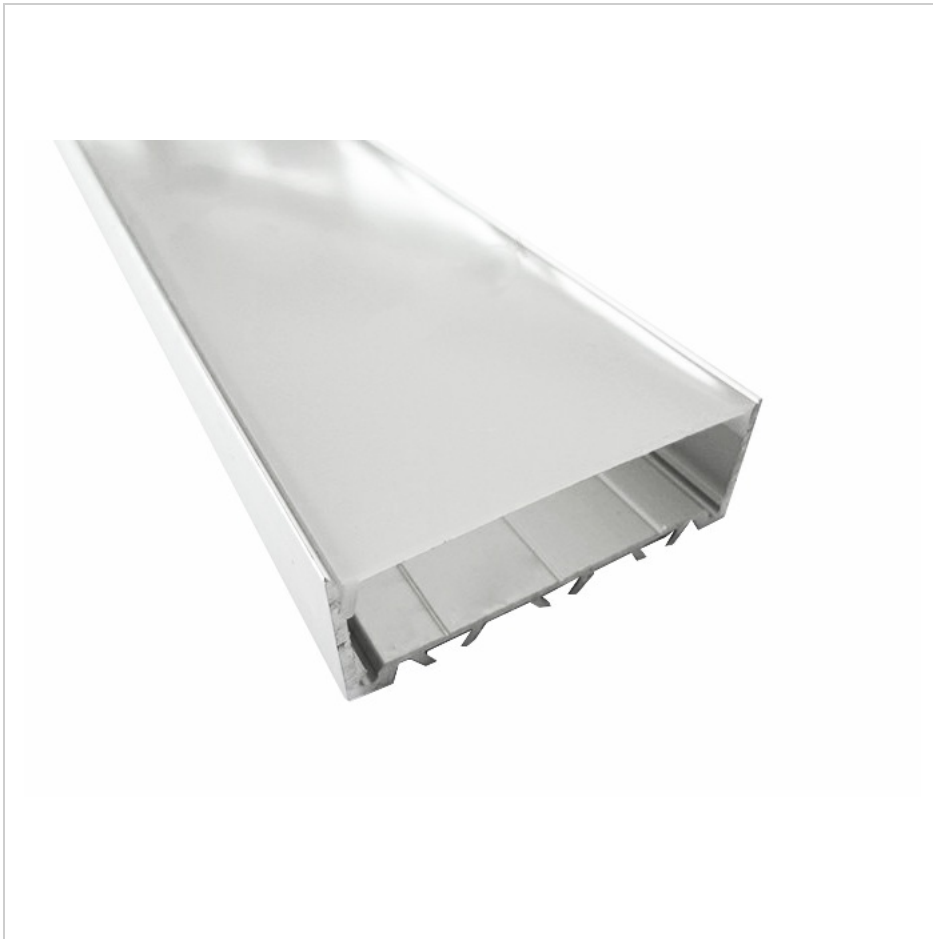
## Product Detail

This type can be used on the surface or recessing on the wall ,ceiling and so on. and it also have many connector ,like L,T,+ shape. this profile is used to create a decorative or general lighting. all depends on your imagination

# MS-P3535E

## Wide LED Aluminum Profile

length	AVAILABLE LIGHTS	PC Cover	Aluminum	Size
0.5~3m optional (Standard: 1m/2m/3m)	8mm,10mm,12mm, 16mm	Clear/Diffused/Milk	6063T5 Aircraft Aluminum	W35mm*H35mm



## Product Detail

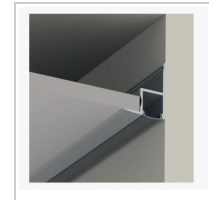
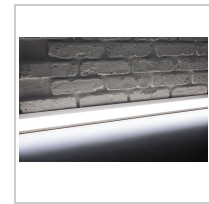
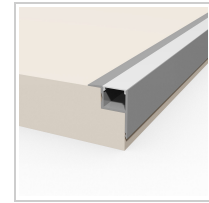
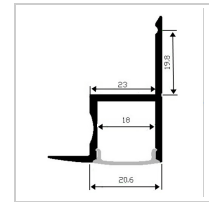
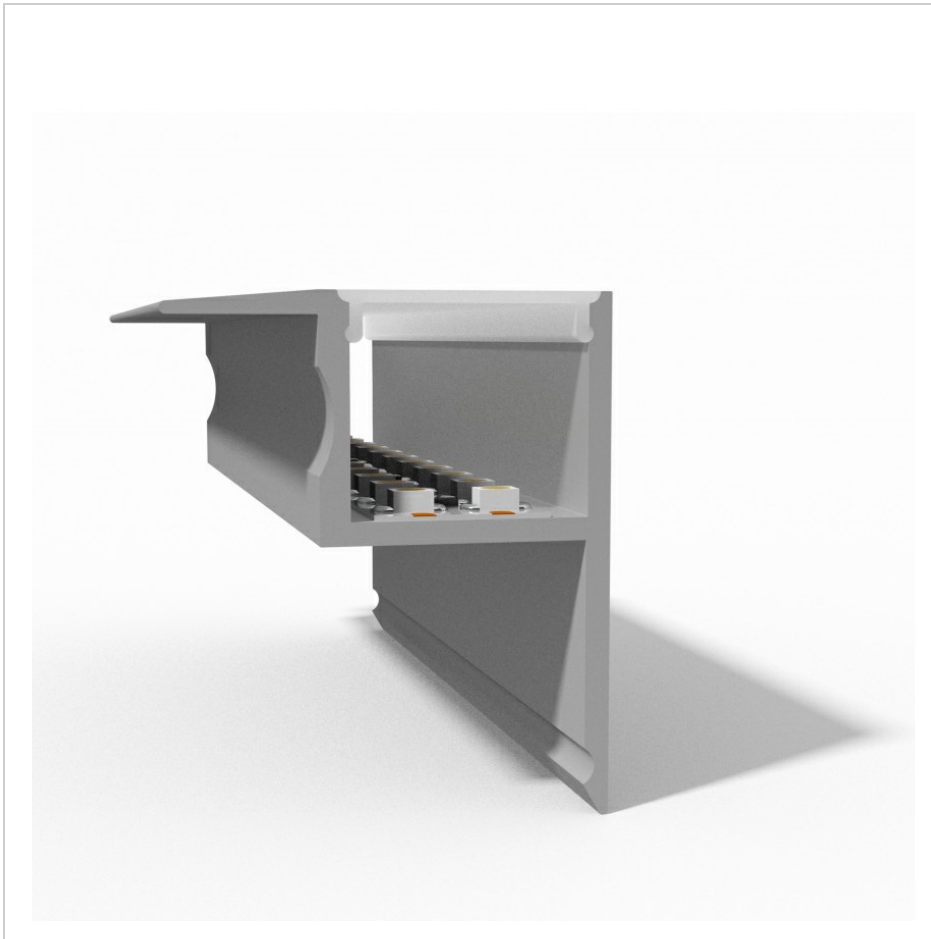
Embedded in this profile walls, ceiling, floor, furniture, you can create a stunning and unique interior design. This fixture can be used in galleries and exhibitions, furniture manufacturing, advertising and architecture.

# MS-P4517

## Wide LED Aluminum profile

length	AVAILABLE LIGHTS	PC Cover	Aluminum	Size
0.5~3m optional (Standard: 1m/2m/3m)	8mm,10mm,12mm, 16mm	Clear/Diffused/Milk	6063T5 Aircraft Aluminum	W45mm*H17mm





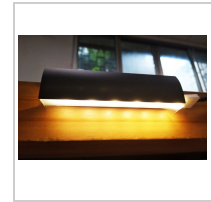
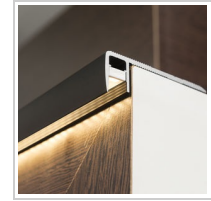
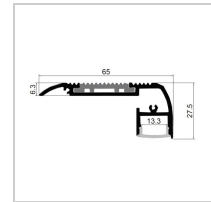
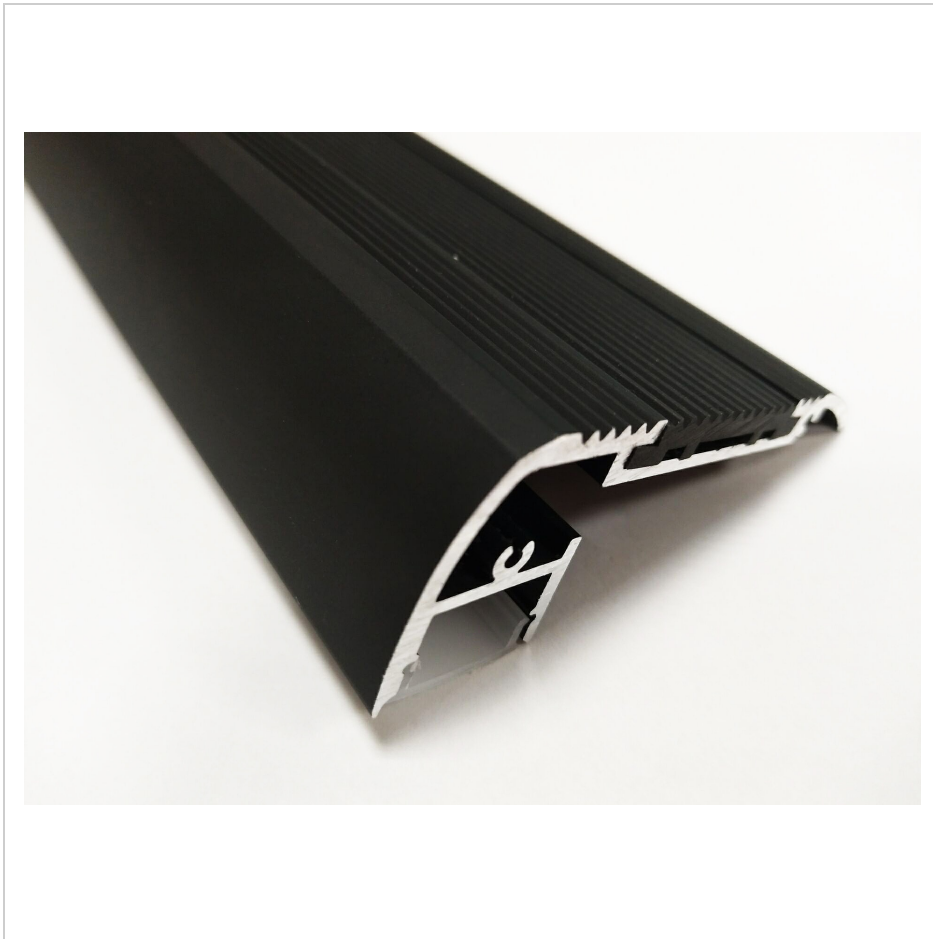
## Product Detail

This profile type, mainly used for mounting in corners of rooms and create a beautiful contour lighting.

# MS-P4538

## Wall Corner LED Aluminum profile

length	AVAILABLE LIGHTS	PC Cover	Aluminum	Size
0.5~3m optional (Standard: 1m/2m/3m)	8mm,10mm,12mm	Clear/Diffused/Milk	6063T5 Aircraft Aluminum	W45mm*H38mm



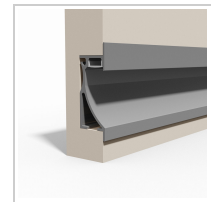
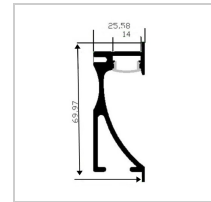
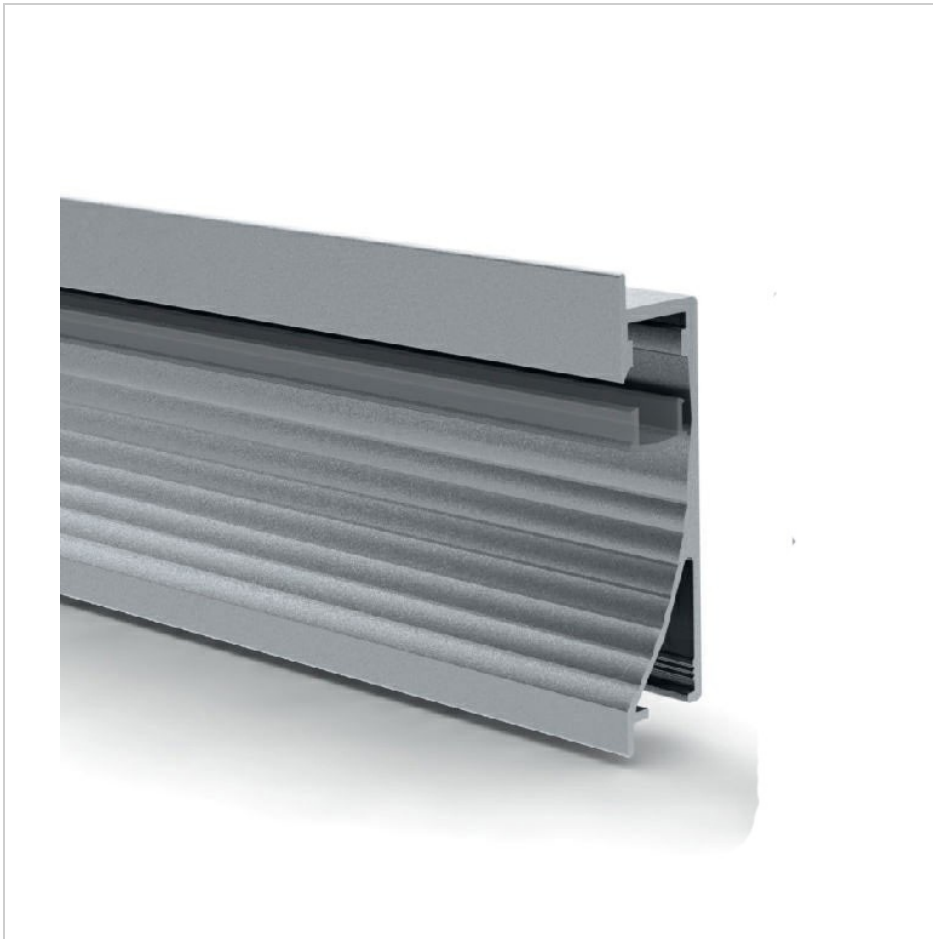
## Product Detail

This Black anodized LED Stair Track Profile is unique LED strip lighting housing that is specially designed to fit over the edge of stairs creating for stairway lighting. Whether you require for indoor stair lighting or outdoor stair lighting we have the solution for you. The black aluminum profile includes the non-slip rubber to hide fixings.

# MS-P6528

## Stair LED Aluminum profile

length	AVAILABLE LIGHTS	PC Cover	Aluminum	Size
0.5~3m optional (Standard: 1m/2m/3m)	8mm,10mm,12mm	Clear/Diffused/Milk	6063T5 Aircraft Aluminum	W65mm*H28mm



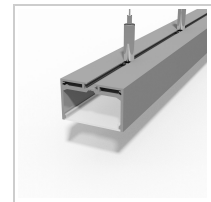
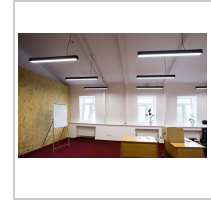
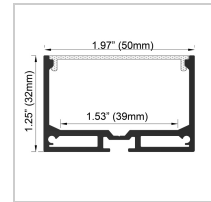
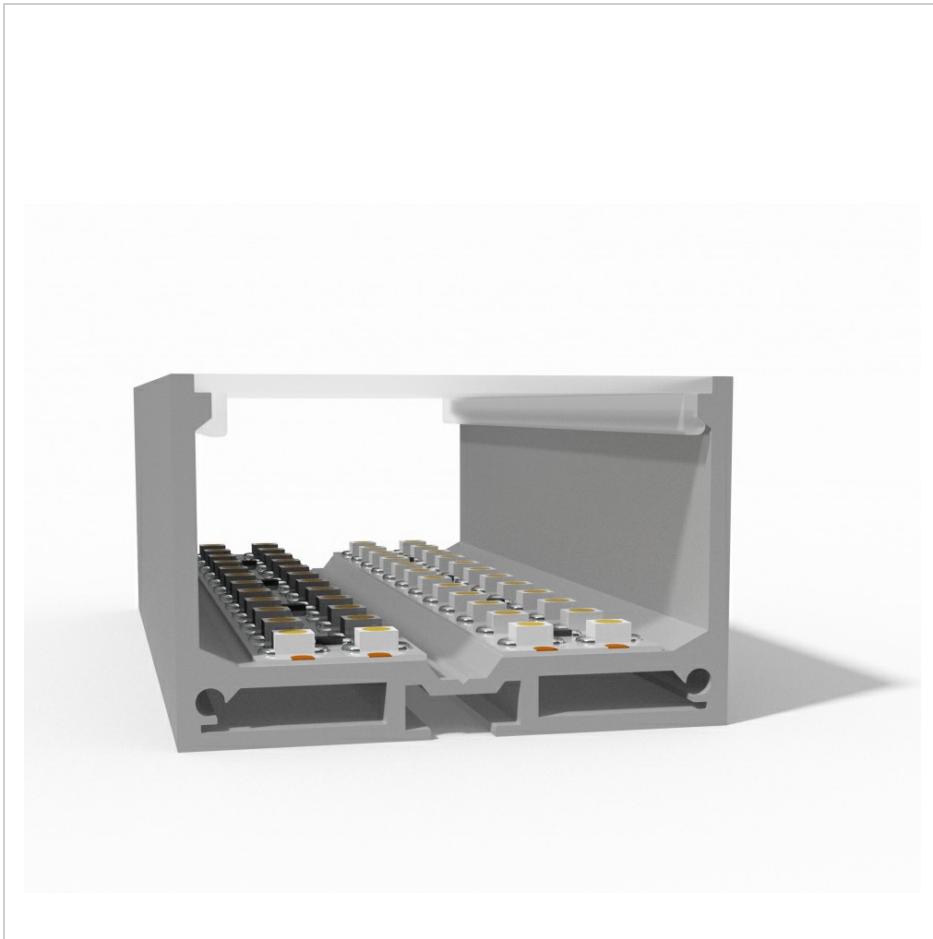
## Product Detail

Profile for in-wall mounted installation with LED light source, mostly used as interior lighting for down or up light. It can be used in exterior applications as a wall light.

# MS-P7026

## Wall LED Aluminum profile

length	AVAILABLE LIGHTS	PC Cover	Aluminum	Size
0.5~3m optional (Standard: 1m/2m/3m)		Clear/Diffused/Milk	6063T5 Aircraft Aluminum	W70mm*H26mm



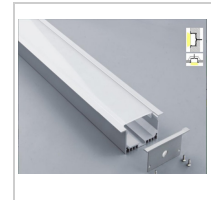
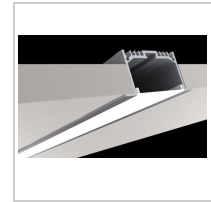
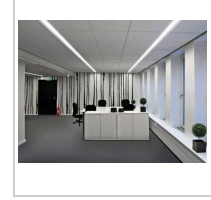
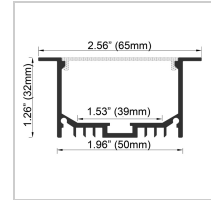
## Product Detail

One of the accessories offered for the LED Large Square Aluminum Extrusion are hanging cables which can make the LED Square aluminum extrusion suspension mounted. End caps protect the LED Aluminum Extrusion from dust and other undesirable elements.

# MS-P5032

## Wide LED Aluminum profile

length	AVAILABLE LIGHTS	PC Cover	Aluminum	Size
0.5~3m optional (Standard: 1m/2m/3m)	8mm,10mm,12mm, 16mm	Clear/Diffused/Milk	6063T5 Aircraft Aluminum	W50mm*H32mm



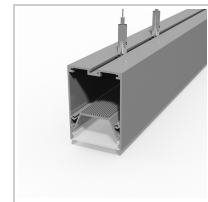
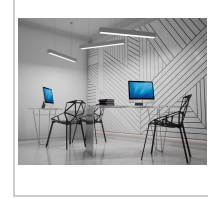
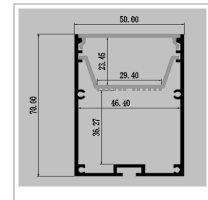
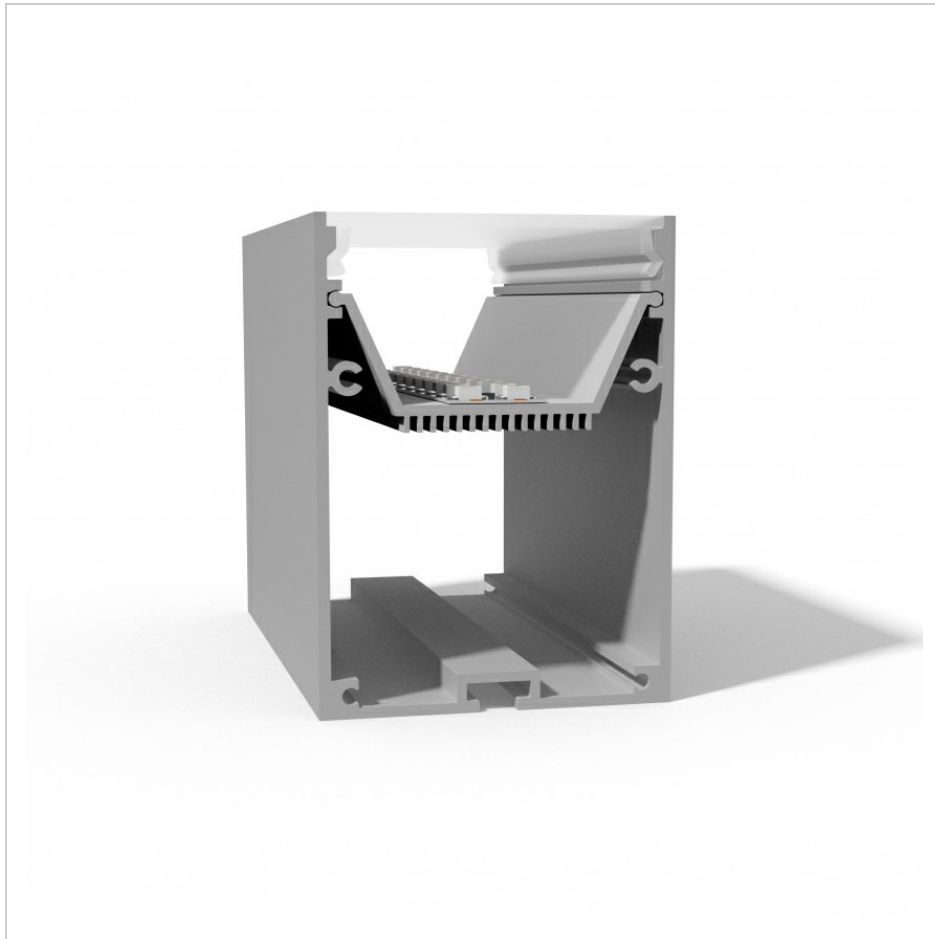
## Product Detail

Recessed Aluminum Extrusion has the spare part at the top of the both sides,so it can be recessed mounted in the wall, and easy to remove.The extrusion is mounted into specially milled grooves with the use of double-sided tape or mounting glue.

# MS-P6532

## Wide LED Aluminum profile

length	AVAILABLE LIGHTS	PC Cover	Aluminum	Size
0.5~3m optional (Standard: 1m/2m/3m)	8mm,10mm,12mm, 16mm	Clear/Diffused/Milk	6063T5 Aircraft Aluminum	W65mm*H32mm



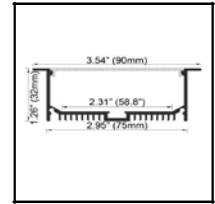
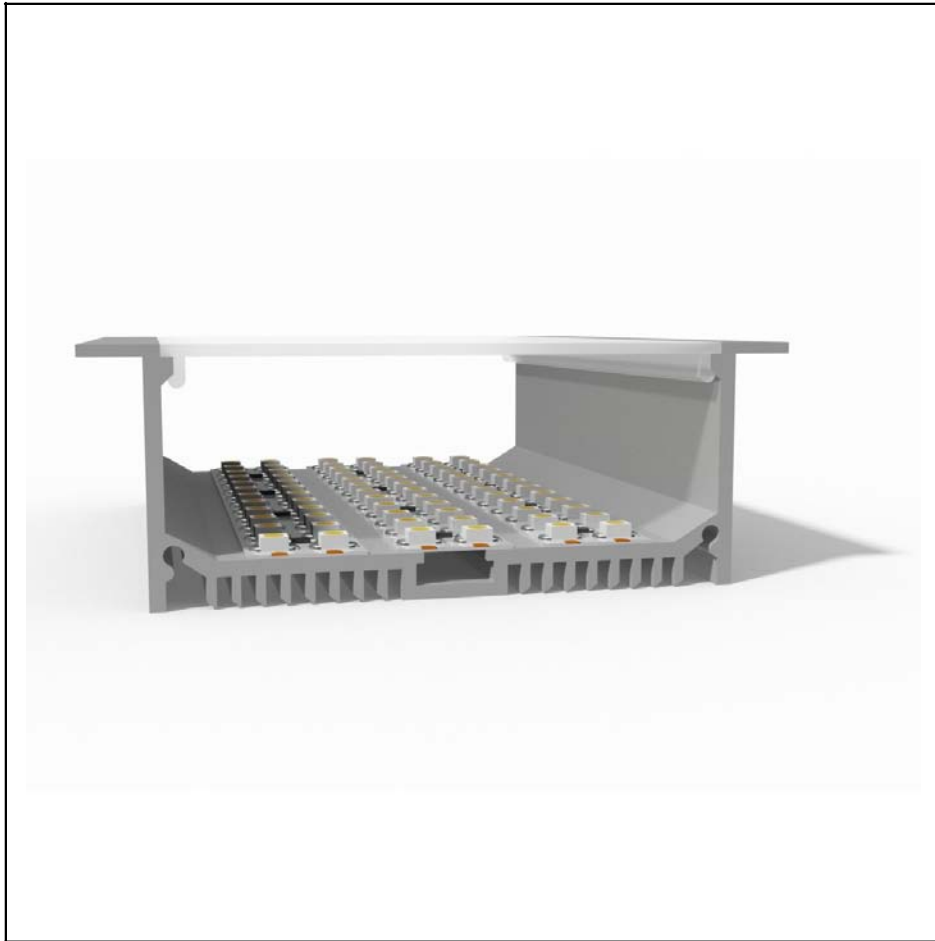
## Product Detail

large aluminium extrusion profile is high,so can put the power into the Large Square LED Aluminium Extrusion Profile.One of the accessories offered for the extrusion are hanging cables which makes the Square LED aluminium profile suspension mounted.

# MS-P7050

## Wide LED Aluminum profile

length	AVAILABLE LIGHTS	PC Cover	Aluminum	Size
0.5~3m optional (Standard: 1m/2m/3m)	8mm,10mm,12mm, 16mm	Clear/Diffused/Milk	6063T5 Aircraft Aluminum	W70mm*H50mm



## Product Detail

One of the accessories offered for the LED Large Square Aluminum Extrusion are hanging cables which can make the LED Square aluminum extrusion suspension mounted. End caps protect the LED Aluminum Extrusion from dust and other undesirable elements, which can make LED strips dirty and consequently deteriorate the lighting parameters.

# MS-P9032

## Wide LED Aluminum Profile

length	AVAILABLE LIGHTS	PC Cover	Aluminum	Size
0.5~3 meter optional (standard: 1m, 2m, 3m)	8mm,10mm,12mm, 16mm	Clear/diffused/milk	6063 T5 Aircraft Aluminum	W90mm*H32mm



## **MSD LIGHTING CO., LIMITED**

---

Address : 6 floor, Lixingda Industrial Park, No 14, 1st zhengcheng 1<sup>st</sup> Road, Fuyong, Bao'an, Shenzhen, China

Tel : +86-755-29820442 Fax : +86-755-23103629

Website : [www.meishida-led.com](http://www.meishida-led.com)

---